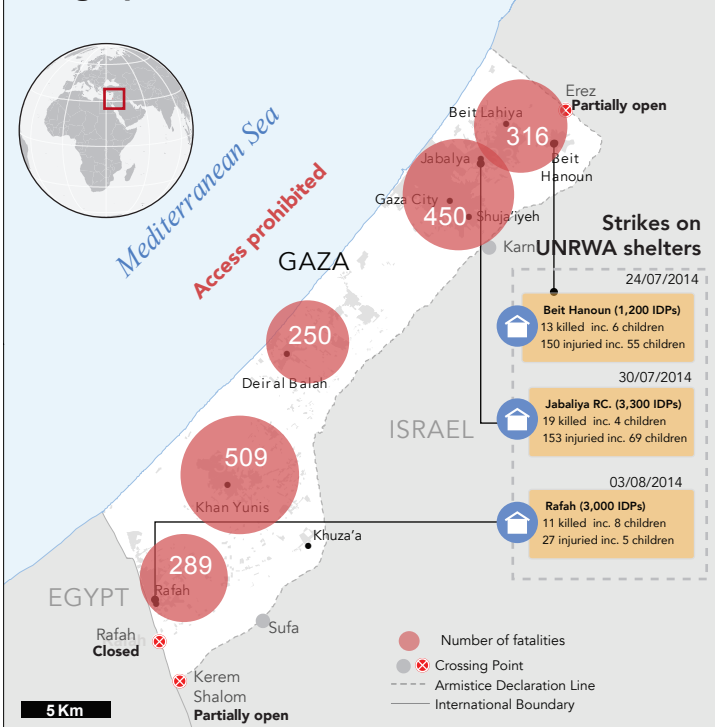


Geographic breakdown of fatalities



1.8 million affected people in the Gaza Strip

9,500* Injured (at least)
2,877 children
3,061 women

520,000* Displaced people in UNRWA / government schools & with host families.

1.5 million People not in shelters have no or extremely restricted access to water.

2-4 hours of electricity per day on average

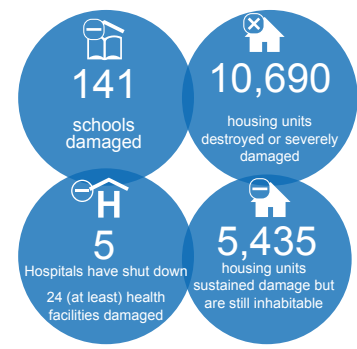
Situation Overview

While the gradual withdrawal of the Israeli army which started on Saturday continued yesterday (4 August), numerous incidents of heavy shelling and fighting have taken place, resulting in additional civilian casualties and damage to homes and civilian infrastructure. Between 10:00 and 17:00, the Israeli military declared a unilateral humanitarian pause to take place across the Gaza Strip, except for certain areas in the eastern part of Rafah governorate and east of Gaza city (Ash Shuja'iyyeh).

Since the launch of the Israeli military operation, hundreds of homes have reportedly been directly targeted by Israeli airstrikes, and it is estimated that nearly 1,000 houses have been totally destroyed or severely damaged in this manner, causing civilian casualties, including multiple members of the same family.

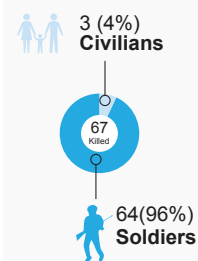
Gaza's medical services and facilities remain on the verge of collapse, with hospitals and clinics overwhelmed. Hospitals are struggling to transfer more patients to medical facilities outside of Gaza, both for life-saving treatment and to reduce the pressure on hospitals and free up beds for new casualties.

Damaged structures



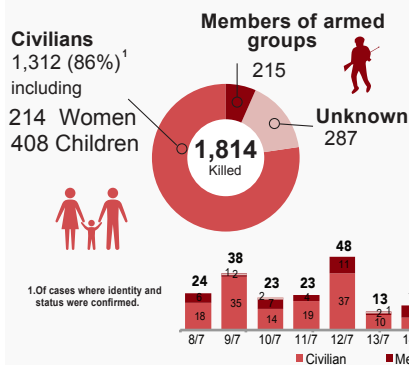
Israeli Fatalities

Fatalities by status

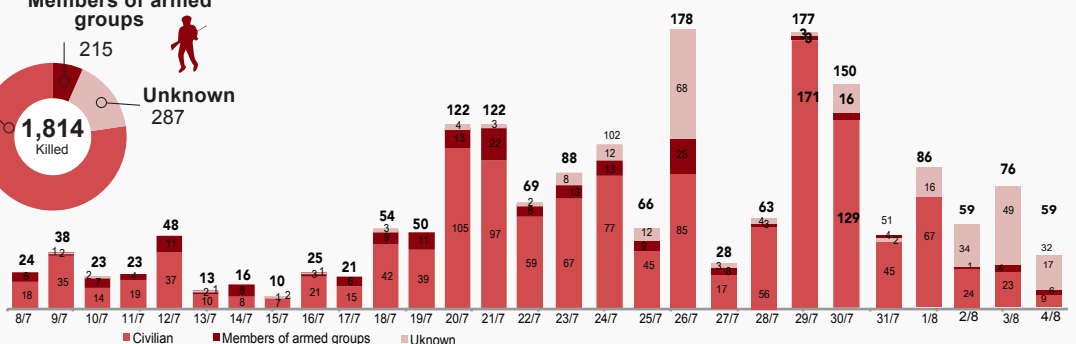


Palestinian Casualties *

Fatalities by status



Fatalities by date



Family-specific Fatalities

As of 4 August 8:00 am, at least 122 families have lost three or more family members in the same incident, for a total of 652 civilian fatalities.

652 Family members (50% of total civilian fatalities)

