

ASSC16

Brighton, UK, July 2-6 2012



... before the Olympics

US

University of Sussex

Sackler Centre for Consciousness Science

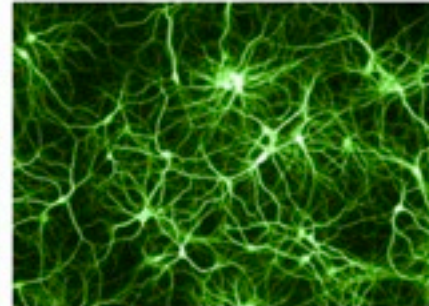
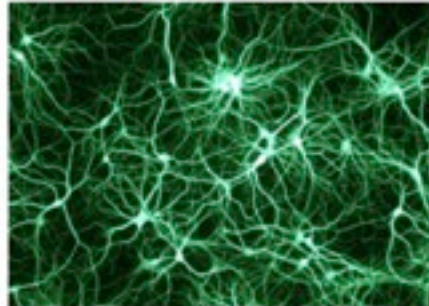
Local organizers

- Anil Seth (conference chair)
- Zoltan Dienes (scientific programme chair)
- Jamie Ward
- Nick Medford
- Hugo Critchley
- Hazelle Woodhurst

Keynote speakers

- Victor Lamme (University of Amsterdam, President)
- Geraint Rees (University College London)
- Josef Perner (University of Salzburg)
- Tania Singer (University of Zurich)
- Tim Bayne (University of Oxford)
- Christof Koch (Caltech & Allen Brain Institute)

Sackler Centre for Consciousness Science



[About](#)

[Research](#)

[People and contacts](#)

[Publications](#)

[News and events](#)

[Media](#)

[Resources](#)

[Get involved](#)

How do conscious experience, subjectivity and free will arise from their biological substrates?

Even in the late 20th century, consciousness was considered by many to be outside the reach or remit of science. Now, powerful new combinations of functional brain imaging, computational modelling and basic neurobiology bring real hope that human ingenuity can resolve this central mystery of life. Practically, an enhanced understanding of consciousness will transform clinical approaches to a wide range of neurological and psychiatric disorders, from coma to insomnia, from depression and schizophrenia to autism and dementia.

Founded in 2010 with a generous donation from the Mortimer and Theresa Sackler Foundation, the Sackler Centre for Consciousness Science (SCCS) represents a new and multidisciplinary approach to clinical intervention and diagnosis, based on the science of the complex brain networks that give rise to consciousness.

The establishment of the cross disciplinary Centre is the latest in a long history of cross disciplinary working at Sussex. The University is committed to ensure this form of collaboration through the establishment of a permanent Centre...

Centre directors

[Dr Anil Seth](#)

[Professor Hugo Critchley](#)

Latest news

SCCS research lands 1st and 2nd prizes at FET11!

8 May 2011

[View all news](#)



University of Sussex

Sackler Centre for Consciousness Science

- Founded in April 2010 by a donation from the Dr. Mortimer and Theresa Sackler Foundation
- **Basic science:** New combinations of theory, large-scale computational modelling, and neuroimaging and behavioural experiments
- **Clinical application:** Translate basic science into the clinical domain; feed-back experimental data. Focus on neuropsychiatry and traumatic brain injury



University of Sussex

Sackler Centre for Consciousness Science

- **Directors:** Anil Seth and Hugo Critchley
- **Faculty:** Zoltan Dienes, Jamie Ward, Nick Medford, Neil Harrison, Ryan Scott, Owen Holland, Natasha Sigala, Ron Chrisley, Maggie Boden, Mike Land
- **Research Fellows:** Adam Barrett, Lionel Barnett, Dan Bor, Sarah Garfinkel, Eugenia Radulescu, Nicholas Rothen, Keisuke Suzuki
- **Students:** Several D.Phil. and M.Sc. students

Brighton



LHR



LGW

- Brighton: 'London by the sea'; population 500,000
- Only **49 minutes** (train) from central London and **30 minutes** from London's Gatwick International airport (LGW)
- Vibrant scientific, artistic, digital communities
- Known for its exceptional nightlife and beachlife
- Minutes from the South Downs national park
- Lots of **hotels at all price ranges**, all within easy walking distance

Brighton



The beach

Brighton



The Royal Pavilion

Brighton



The North Laines

Brighton



A good pub

Brighton

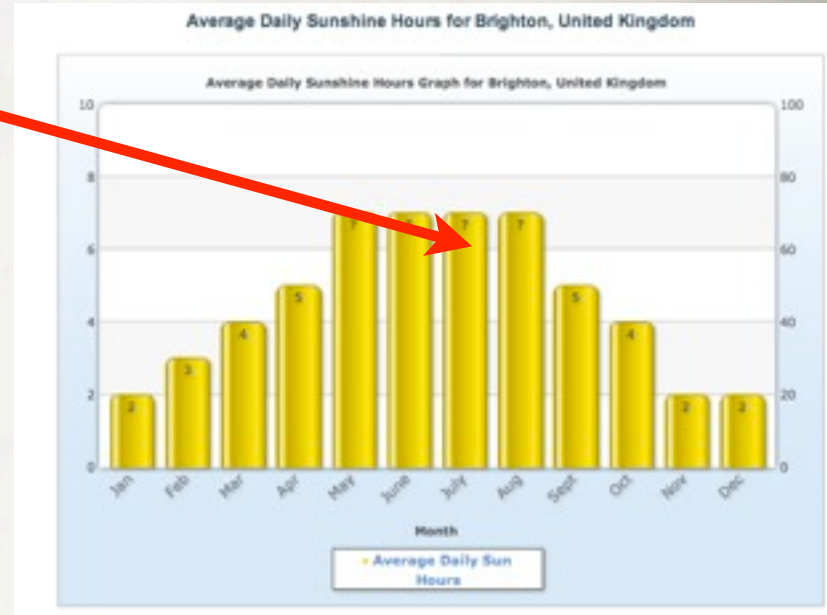
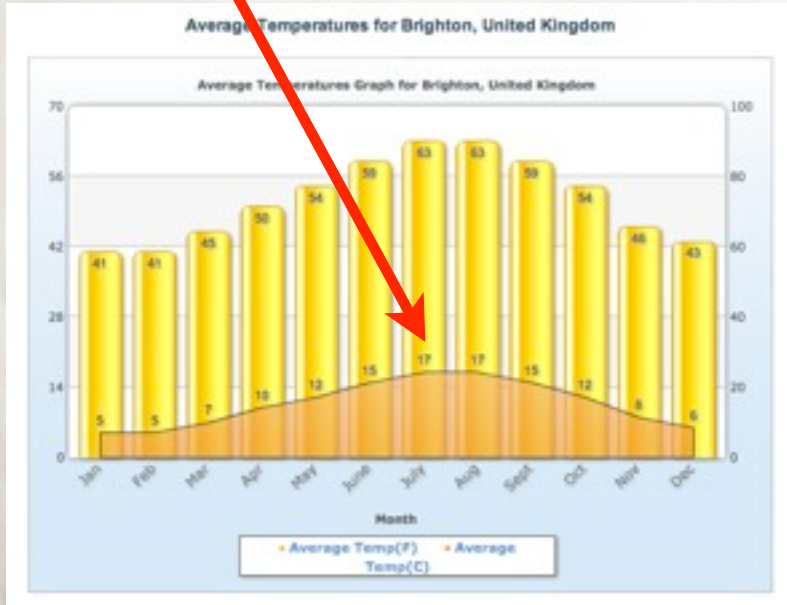


The South Downs

Brighton

Sunny!

Warm!



Not much rain!



brighton
DOME



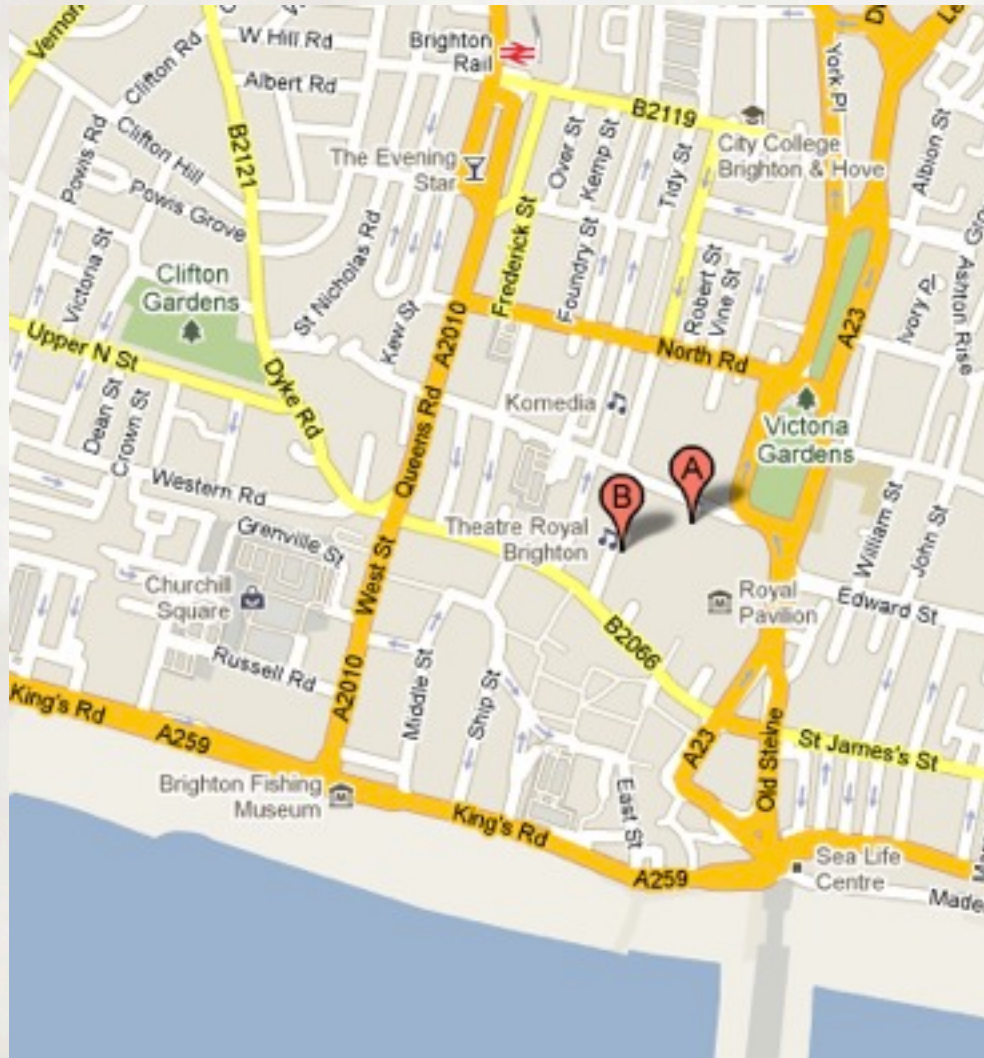
WELCOME

With three historic spaces along with additional breakout areas, Brighton Dome provides a unique and versatile venue for a variety of corporate events. It is part of the glorious Royal Pavilion Estate, located in the heart of Britain's cosmopolitan city-by-the-sea and within easy reach of all the hospitality, leisure and entertainment that Brighton has to offer.

Inspired by the Corn Exchange in Paris, this remarkable building was originally designed as the Prince Regent's riding stables and riding house in 1805. It was restored in 1935, with a resplendent art deco interior in the

Concert Hall and a beautiful sprung maple floor in the Corn Exchange. Following a £22 million refurbishment the Brighton Dome reopened in 2002, lovingly restored to bring a touch of elegance and grandeur to any event.

We pride ourselves on customer care and our dedicated event coordinators are on hand from start to finish ensuring a successful well-planned event every time. Combining state of the art facilities and unrivalled in-house expertise with Grade 1 listed heritage, Brighton Dome has all the ingredients to make your event a truly unique and memorable experience.



< 10 mins walk

The Dome is Brighton's premier conference and arts venue; it is right in the city centre



UNIQUE

ELEGANT



INTIMATE

See you in Brighton in 2012!

