

302 Skylark



Skylark. Adult (25-X).

SKYLARK (*Alauda arvensis*)

IDENTIFICATION

16-18 cm. Brown plumage, streaked; outermost tail feathers white; wing with a white band on tip; head with crest; **Juveniles** have pale edges on feathers.

SIMILAR SPECIES

This species is unmistakable due to its crest on head, white band on wing and white outermost tail feathers.

SEXING

Plumage of both sexes alike. Size can be helpful in extreme birds: **male** with wing longer than 114 mm; **female** with wing shorter than 108 mm.

AGEING

2 types of age can be recognized:
Juvenile with fresh plumage; feathers with pale edges.
Adult without pale edges on feathers; worn feathers in **spring**.
 After the **postbreeding/postjuvenile** moult, ageing is not possible using plumage characters.

MOULT

Complete **postbreeding** and **postjuvenile** moults, finished in October.

PHENOLOGY

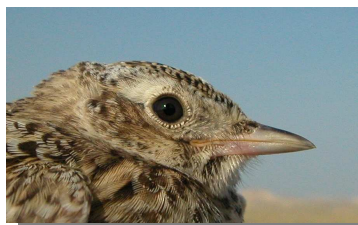
I	II	III	IV	V	VI	VII	VIII	IX	X	XI	XII

STATUS IN ARAGON

Resident, with contribution of wintering European birds.



Skylark. Juvenile (15-VII).

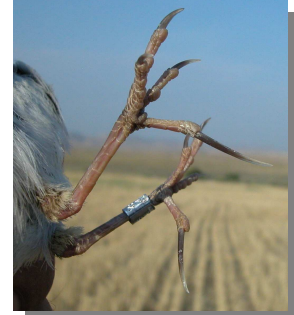


Skylark. Pattern of head and bill: top adult (25-X); bottom juvenile (15-VII).

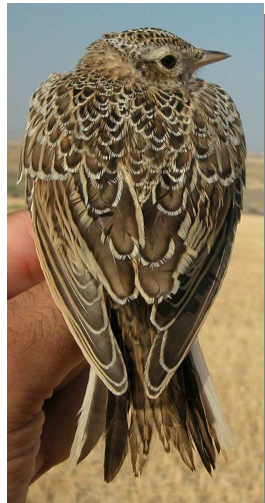
302 Skylark



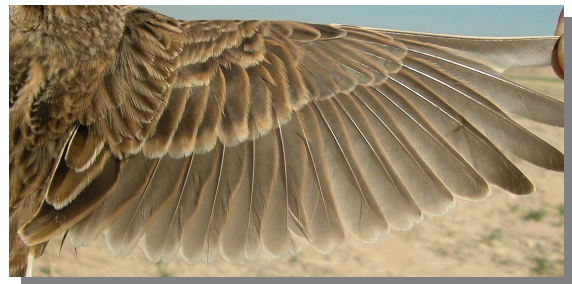
Skylark. Breast pattern: left adult (25-X); right juvenile (15-VII)



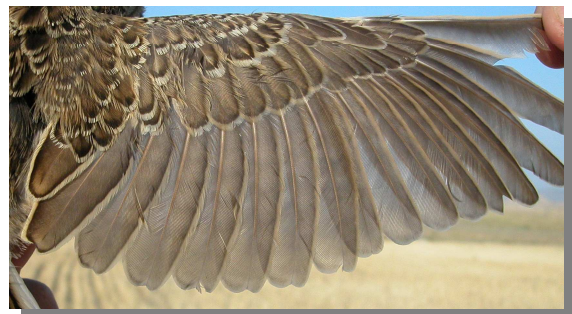
Skylark. Legs pattern: left adult (25-X); right juvenile (15-VII)



Skylark. Upperpart pattern: left adult (25-X); right juvenile (15-VII)



Skylark. Adult: pattern of wing (25-X).



Skylark. Juvenile: pattern of wing (15-VII).



Skylark. Tail pattern: left adult (25-X); right juvenile (15-VII)