





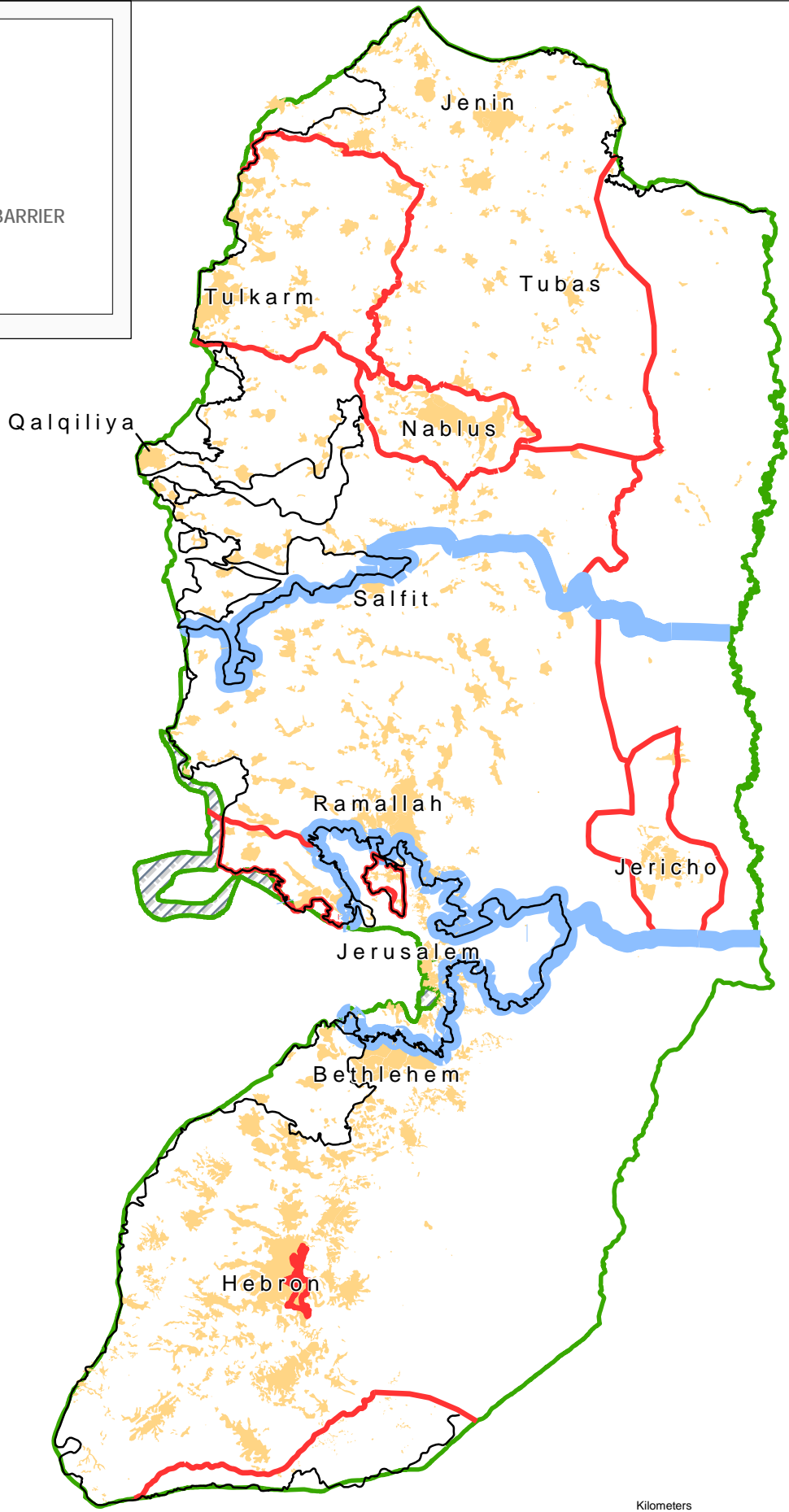


# Territorial fragmentation of the West Bank

CAP 2006 - Revised Emergency Appeal

**LEGEND**

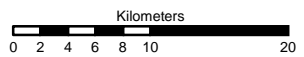
-  TRISECTION BOUNDARIES
-  ENCLAVE BOUNDARIES
-  CONSTRUCTED AND PLANNED BARRIER
-  1949 ARMISTICE LINE (Green Line)



### TERRITORIAL FRAGMENTATION

A combination of checkpoints, physical obstacles and a permit system has effectively cut the West Bank into three distinct areas in addition to East Jerusalem. Within these areas further enclaves have been created – also bordered by checkpoints and roadblocks – that has led to one Palestinian community being isolated from its neighbour.

The Jordan Valley is practically cut off to Palestinians from the rest of the West Bank. And, over the past year, progressively fewer Palestinians have been able to obtain permits to visit ‘closed areas’ – land to the west of the West Bank Barrier.



The designations employed and the presentation of material on this map do not imply the expression of any opinion whatsoever on the part of the Secretariat of the United Nations concerning the legal status of any country, territory, city or area or of its authorities, or concerning the delimitation of its frontiers or boundaries.