

REFERENCE MAP - as of October 2005

WEST BANK & GAZA STRIP



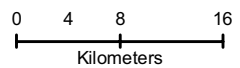
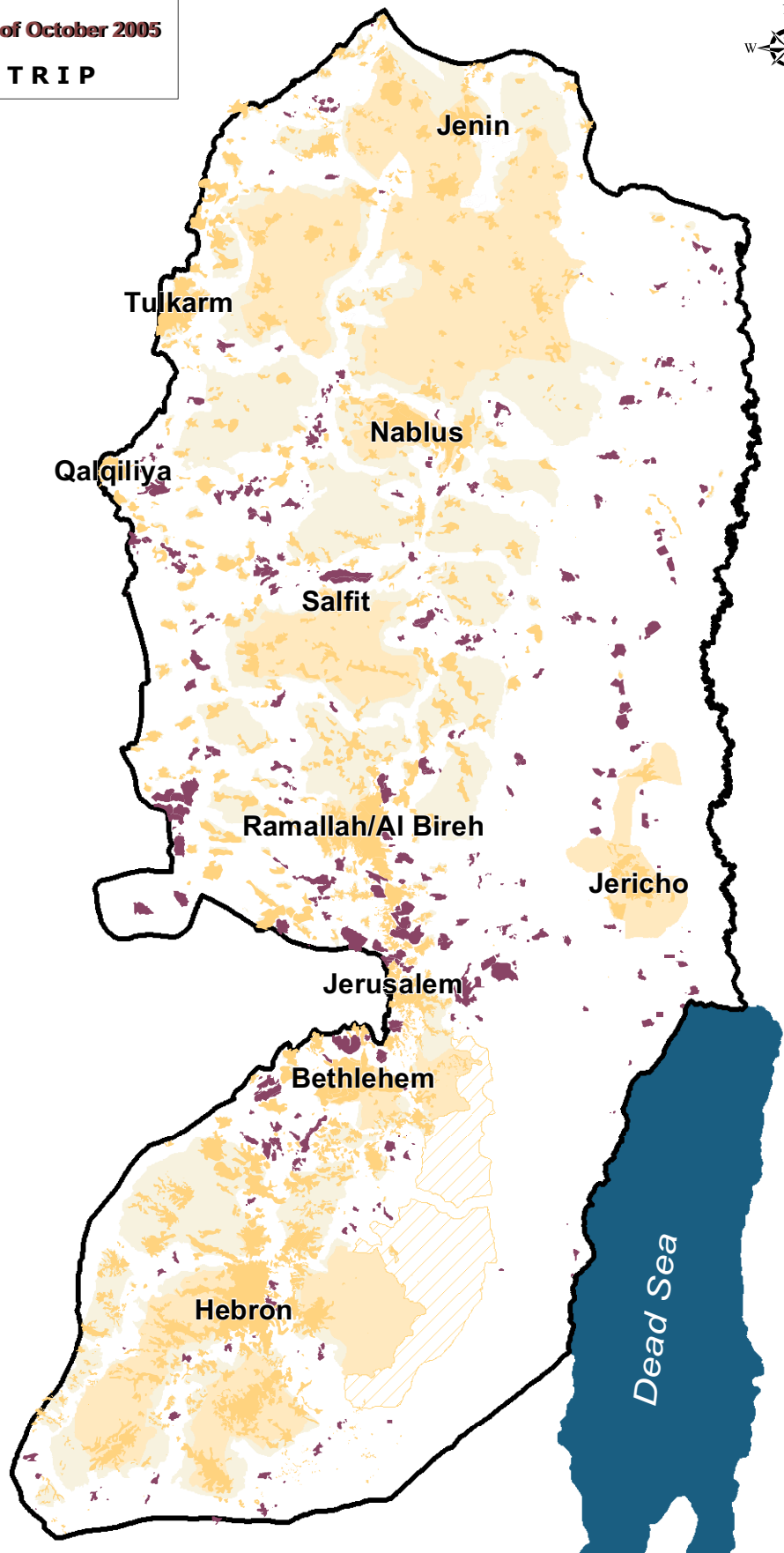
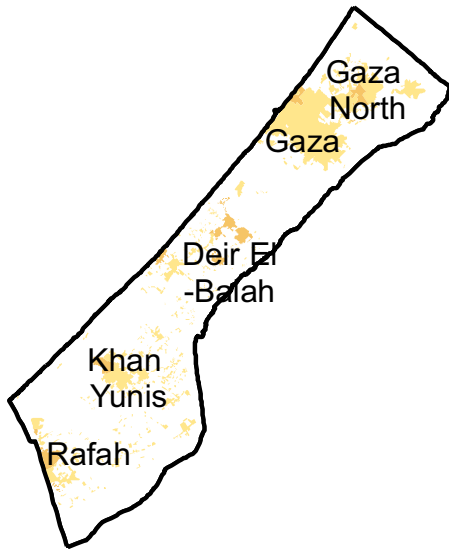
Residential Areas

- Palestinian Communities
- Israeli Settlements

Oslo Agreements

- AREA (A)¹
- AREA (B)²
- AREA (C)³
- Nature Reserve
- Special Case (H2)⁴

1-Full Palestinian civil and military control.
 2-Full Palestinian civil control and joint Israeli-Palestinian military control.
 3-Full Israeli civil and military control.
 4-Hebron Agreement.



OCHA **United Nations Office for the Coordination of Humanitarian Affairs**

Cartography: OCHA - oPt - October 2005.
 Base data: PA MoP, July 2000, OCHA update 2004
 For comments contact <ochaopt@un.org> or Tel. +972 (02) 582-9962
<http://www.ochaopt.org>

The designations employed and the presentation of material on this map do not imply the expression of any opinion whatsoever on the part of the Secretariat of the United Nations concerning the legal status of any country, territory, city or area or of its authorities, or concerning the delimitation of its frontiers or boundaries.