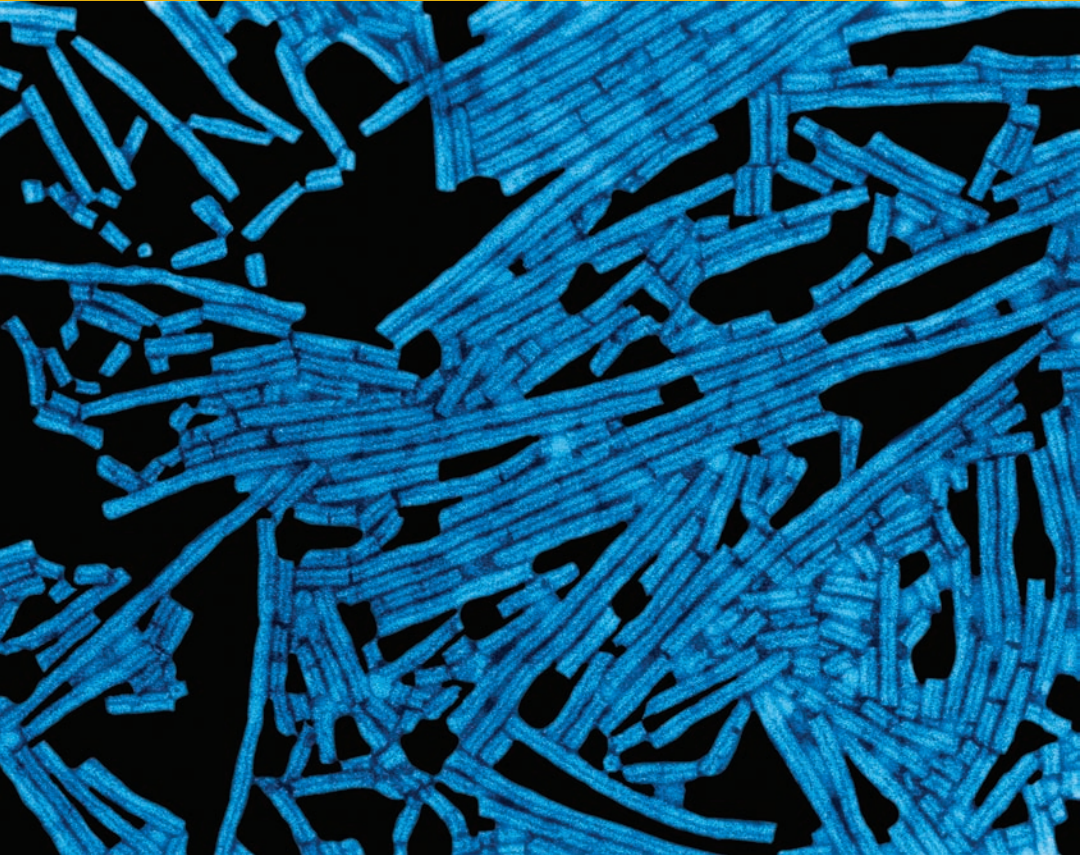
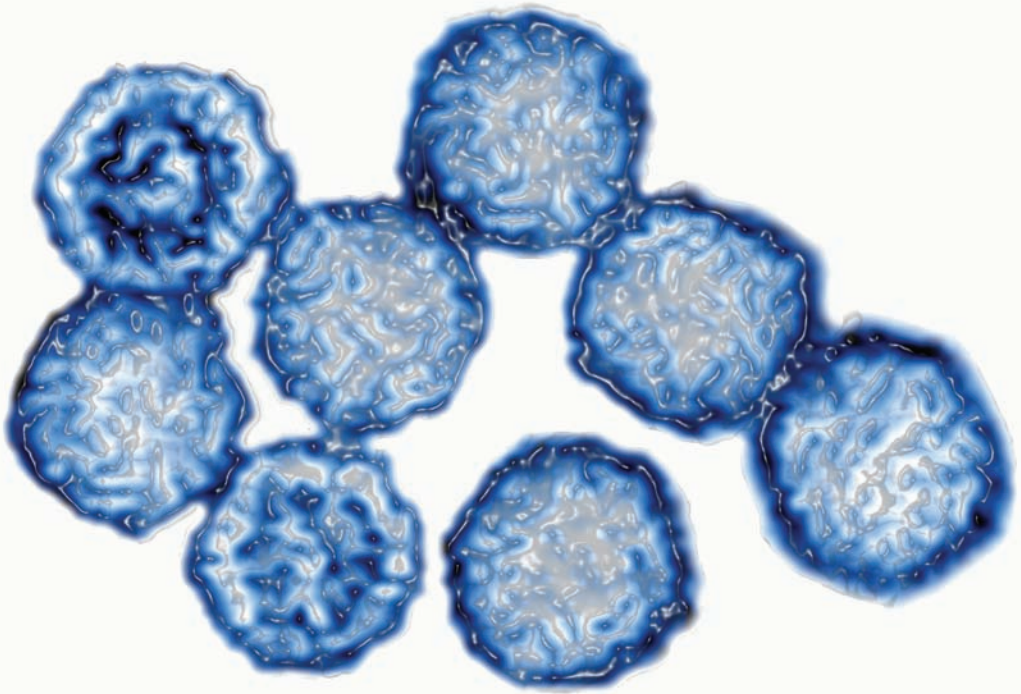


A Planet of **VIRUSES**

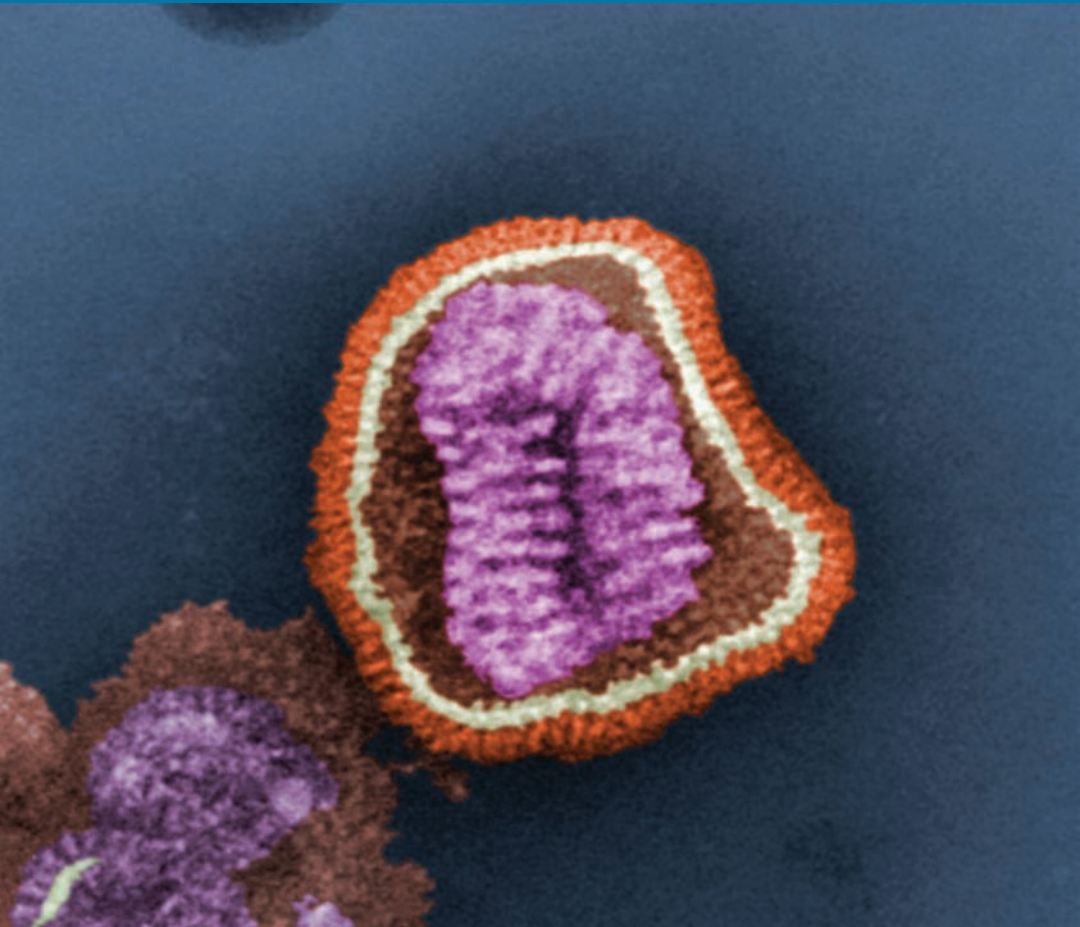
The University of Chicago Press | Chicago and London



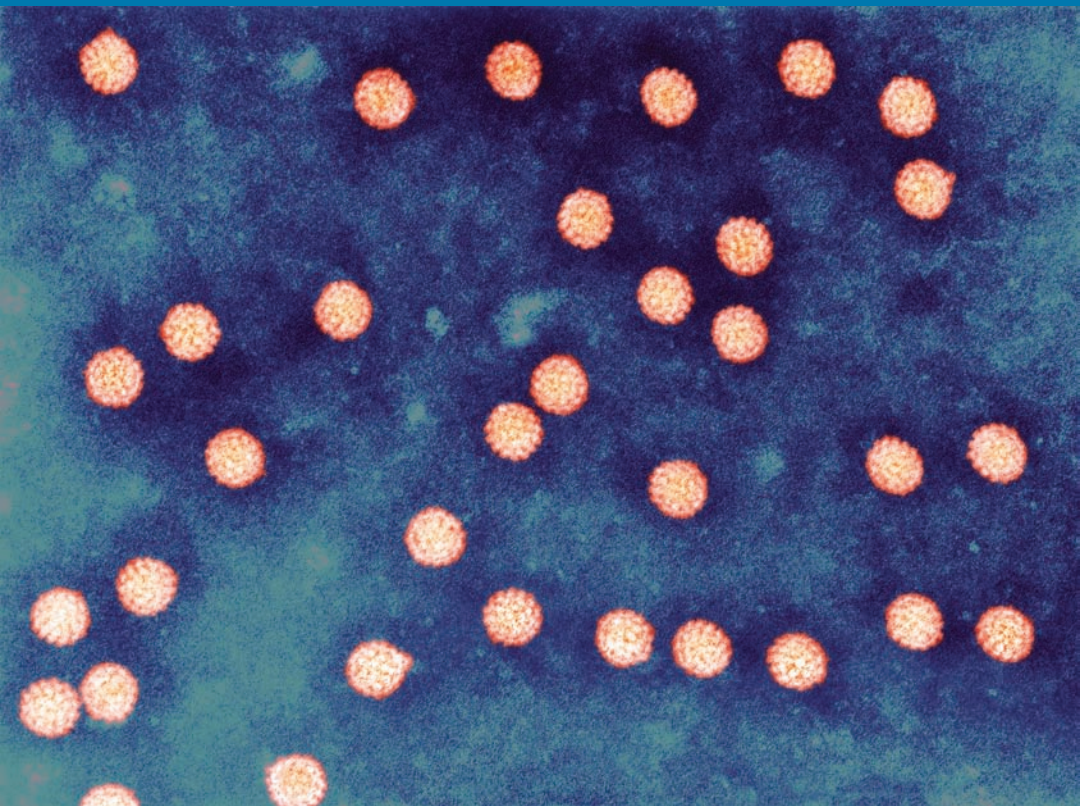
Tobacco mosaic viruses, which cause plant diseases worldwide



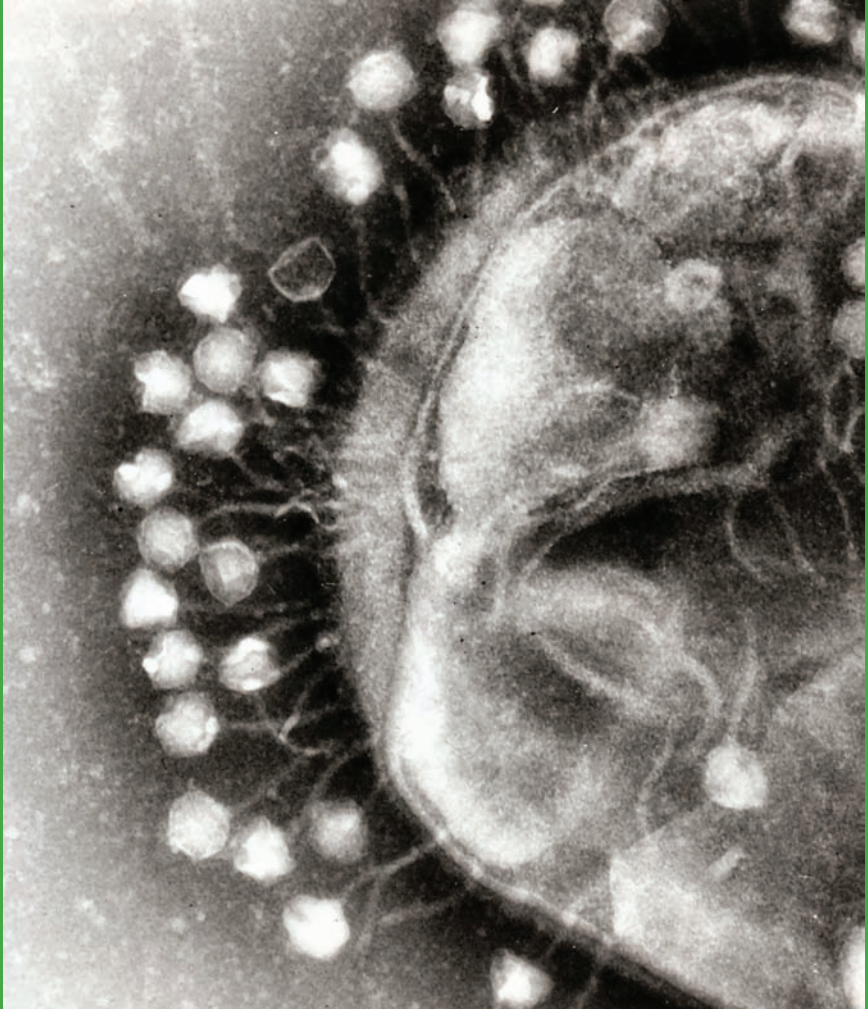
Rhinoviruses, the most common cause of colds



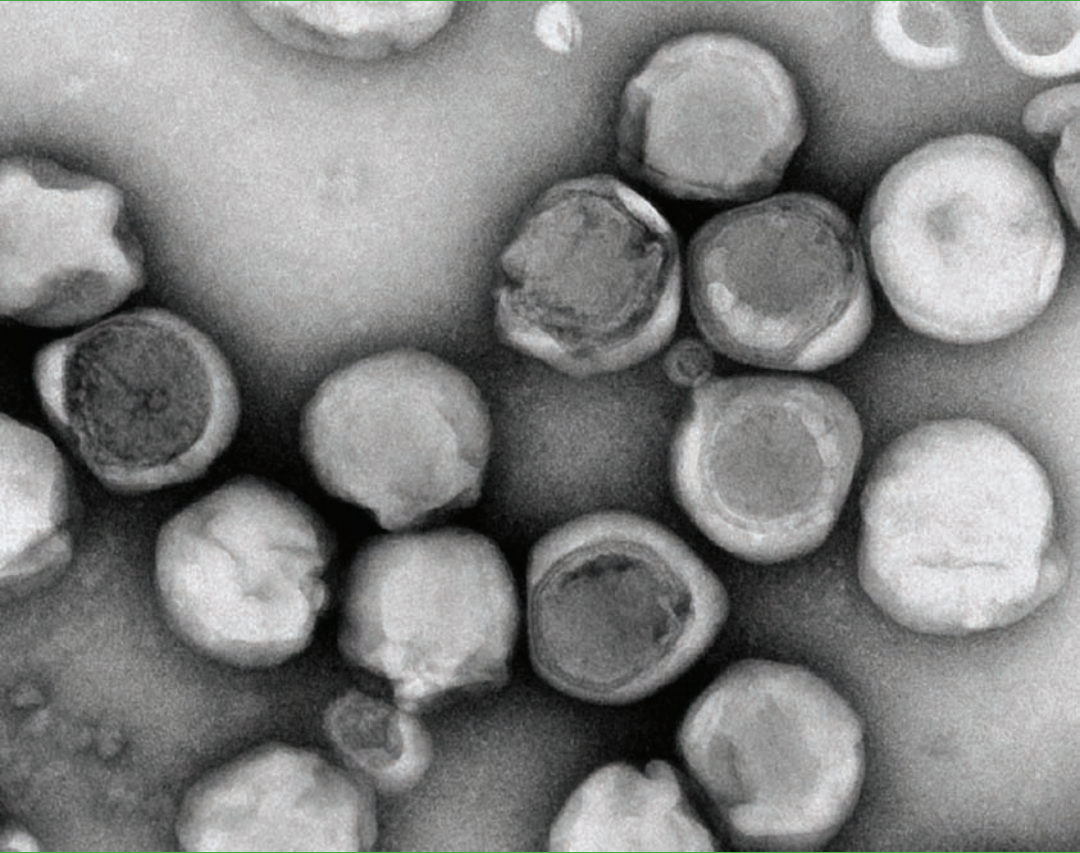
Influenza virus: the envelope layer appears orange and capsid is gray-white, with purple RNA segments inside



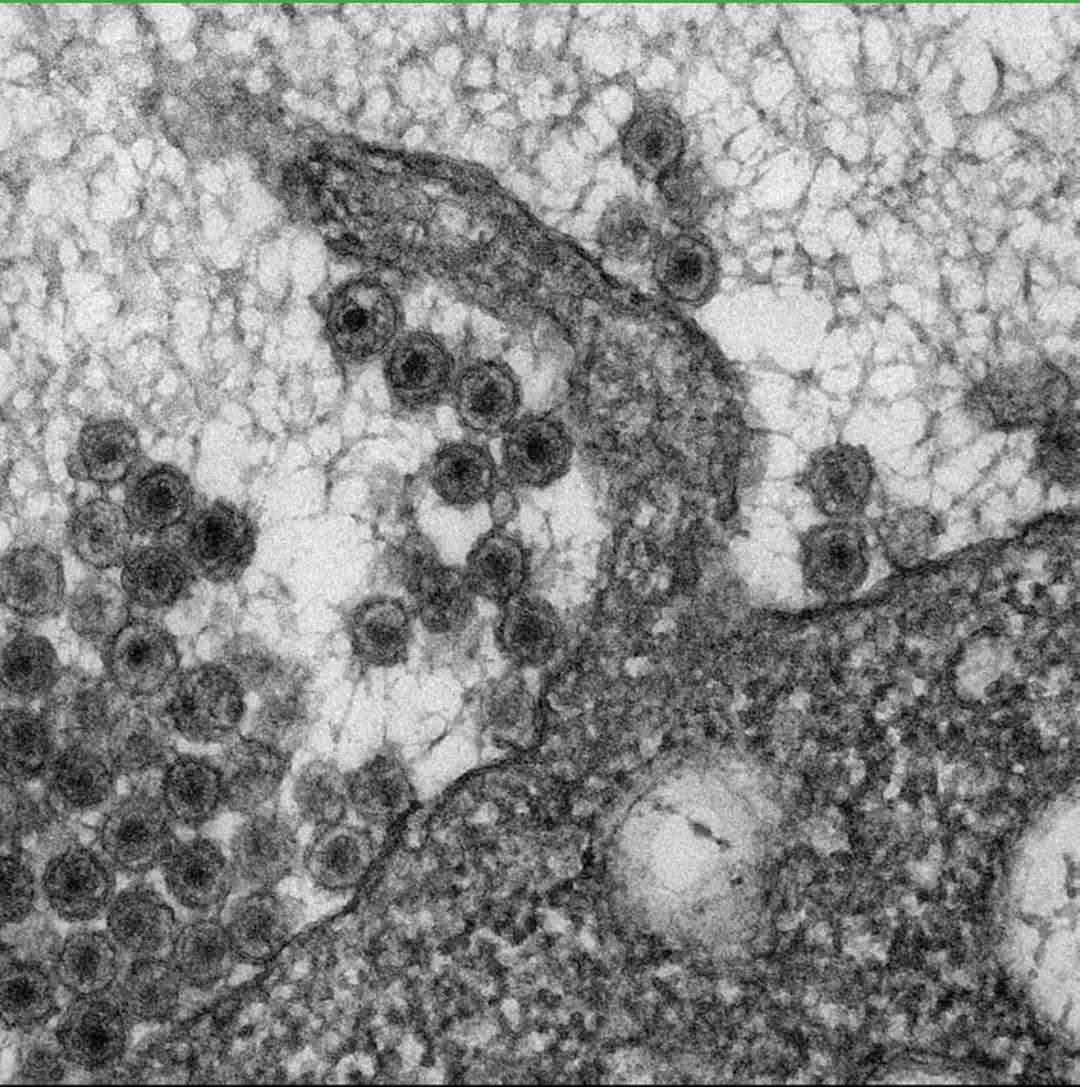
Human papillomaviruses in suspension



Bacteriophages attach to the surface of the host cell,
the bacterium *Escherichia coli*

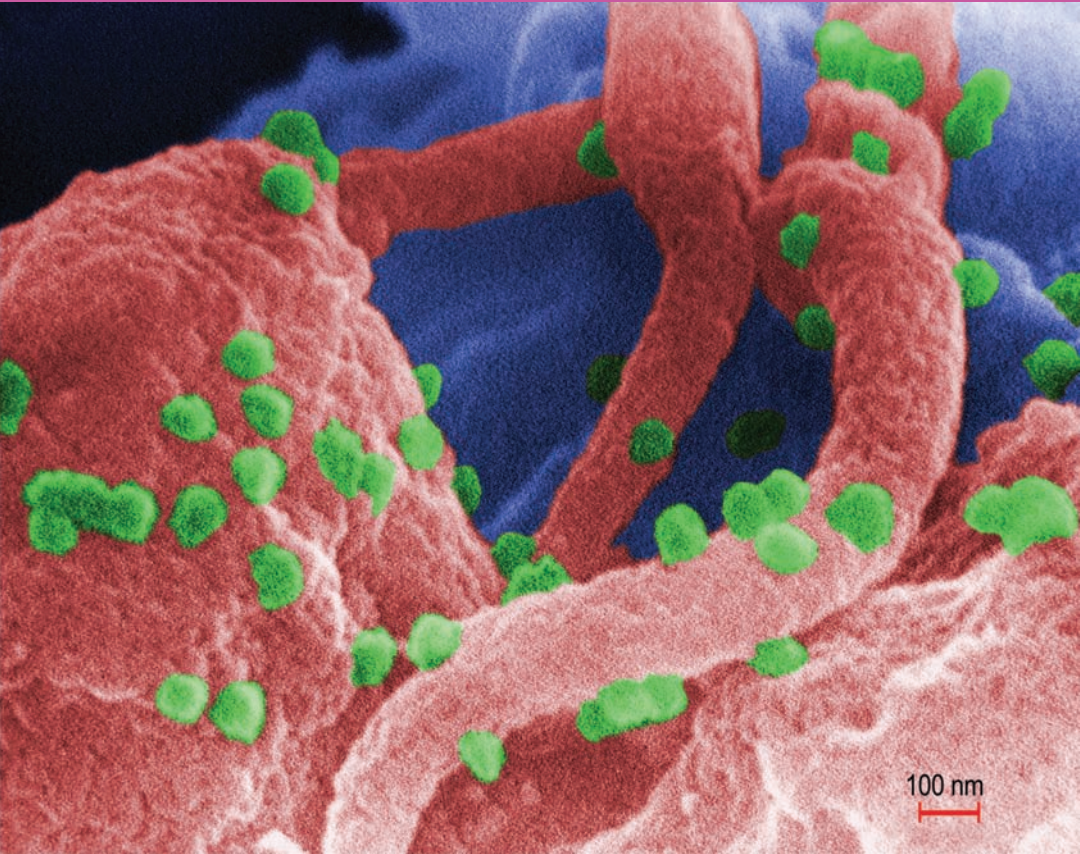


Emiliana huxleyi viruses infect ocean algae
(the viruses shown here in suspension)

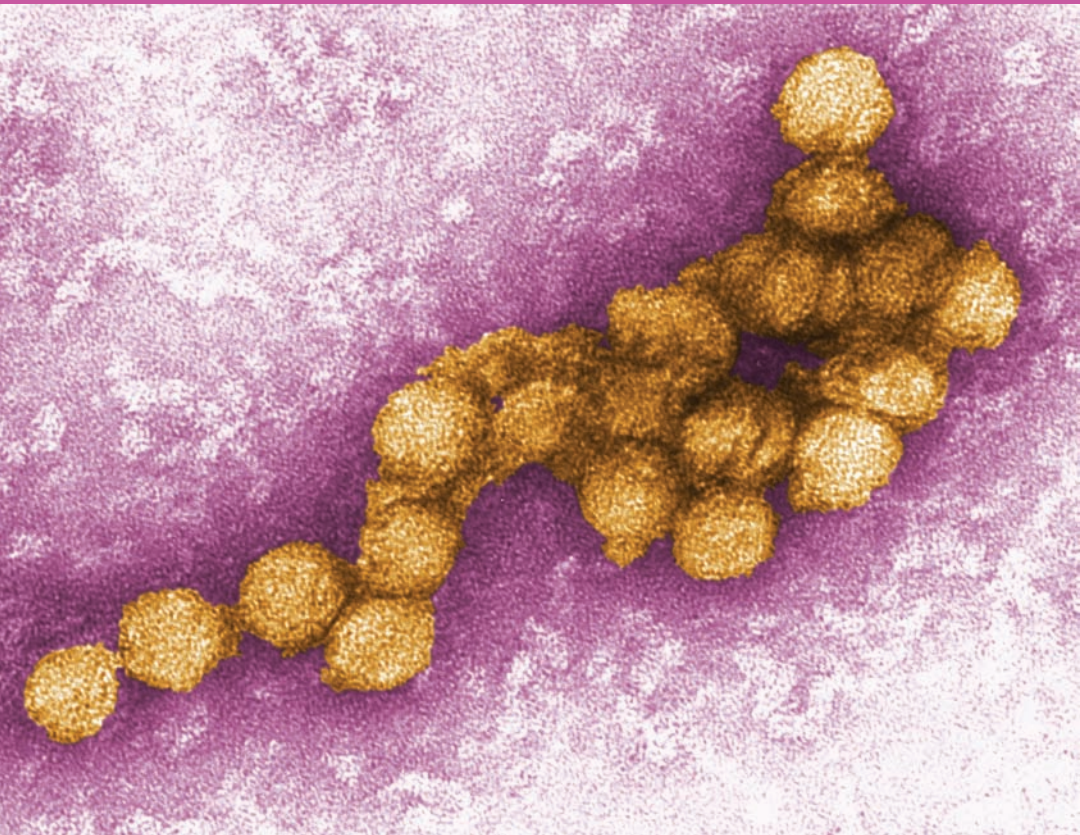


200 nm

Avian leukocyte viruses bud from a human white blood cell



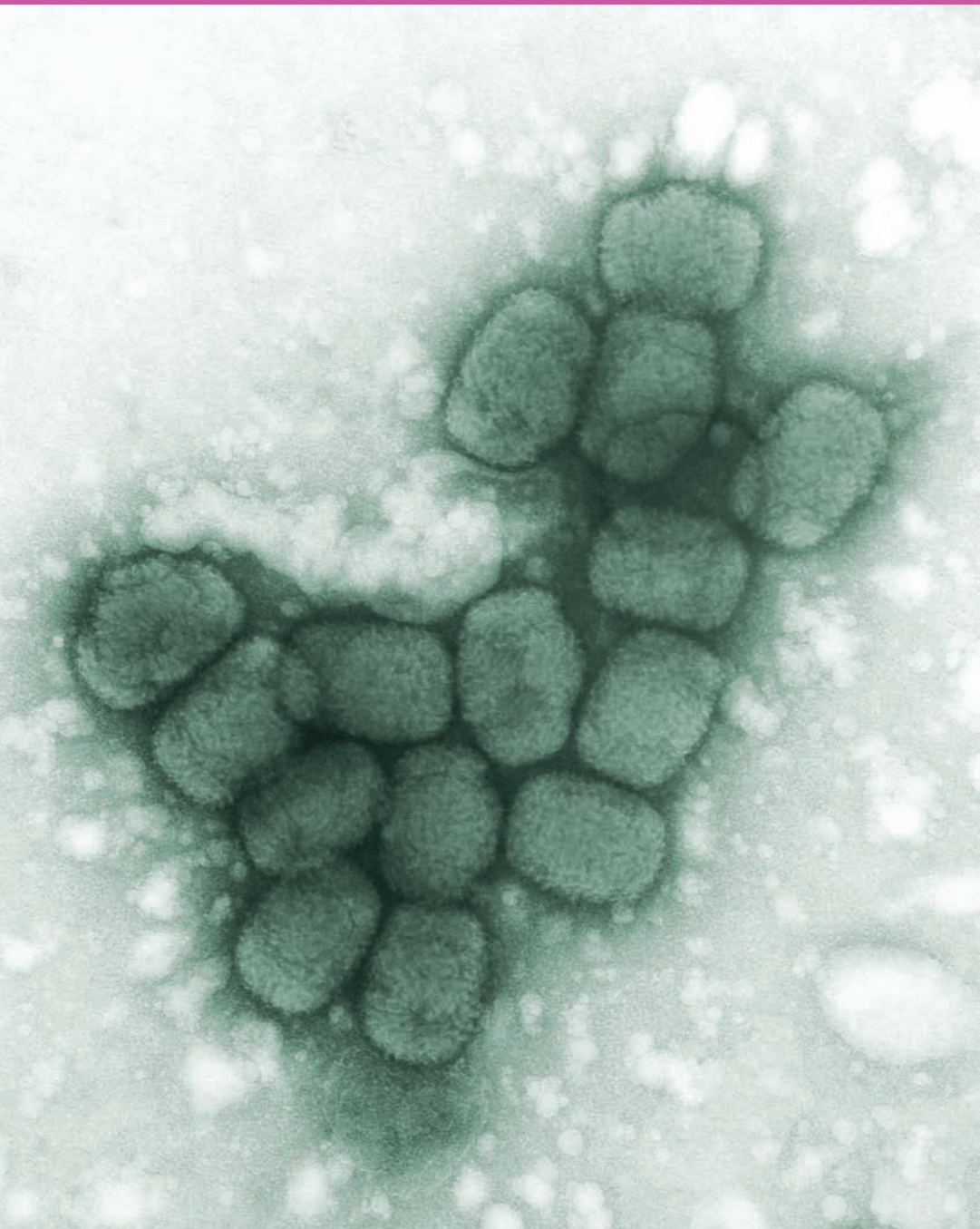
Human immunodeficiency viruses on the surface of a CD4 white blood cell



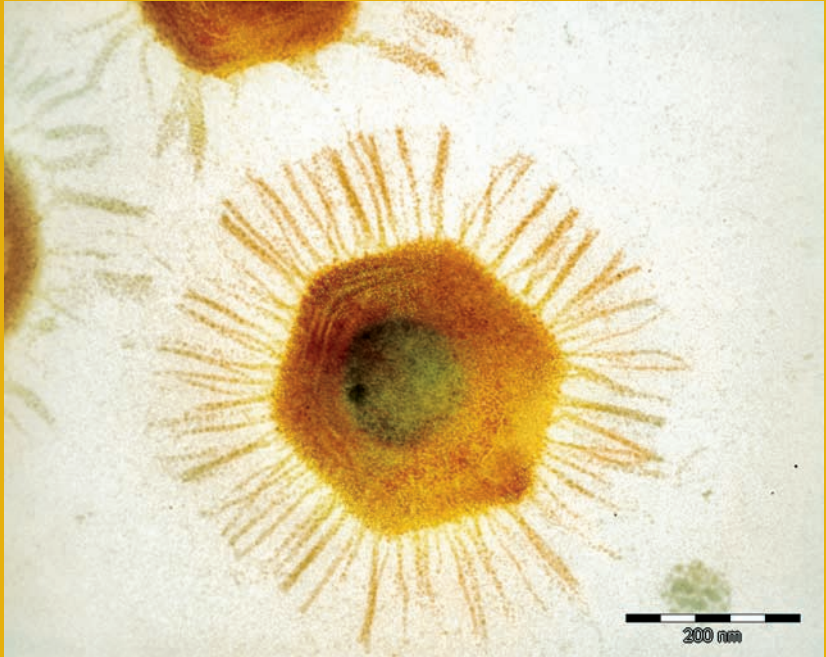
West Nile viruses in suspension



Ebola virus in suspension



Smallpox viruses in suspension



Mimivirus: the largest known virus