

www.ifrc.org
Saving lives,
changing minds.

Preliminary Emergency Appeal Turkey: Van Earthquake

 International Federation
of Red Cross and Red Crescent Societies

Preliminary Emergency Appeal n° MDRTR002 GLIDE n° EQ-2011-000162-TUR 26th October 2011

This Preliminary Emergency Appeal seeks CHF 10,421,025 in cash, kind, or services to support the Turkish Red Crescent Society (TRCS) to assist 10,000 households (50,000 beneficiaries) for 9 months; the operation will be completed by 30th June 2012. A Final Report will be made available by the end of September 2012.

An earthquake measuring 7.2 on the Richter Scale struck the province of Van in eastern Turkey at 13:41 local time on Sunday, 23rd October 2011. According to the initial assessment made immediately after the quake, 461 people died and more than 1,352 people were injured. Assessments so far also show that 2,262 buildings have been destroyed, rendering tens of thousands of people homeless. Search and rescue efforts are ongoing round the clock.



Survivors and emergency service workers search frantically after a 7.2 magnitude quake topples buildings and some roads in Turkey. *Photo: Reuters/AlertNet*

The Turkish Red Crescent has responded to the disaster immediately, and continues to be involved in the emergency relief efforts. While a number of basic needs are being met, it is obvious that significant humanitarian challenges remain, particularly in ensuring adequate shelter for those most affected.

The Turkish Red Crescent Society (TRCS) has launched a national fundraising campaign, and it is anticipated that there will be a high level of response to their domestic appeal. The present International Federation appeal aims to complement the support being raised within the country as an expression of international concern and solidarity with those affected by this massive disaster. The Turkish Red Crescent is very grateful for all the offers of assistance by the International Federation of Red Cross and Red Crescent Societies and all sister National Societies.

Based on the current situation, this Preliminary Emergency Appeal focuses on providing support to the Turkish Red Crescent Society to take an appropriate and timely response in delivering assistance and relief in the following sectors: shelter and non-food relief items. Details of the plan of action and budget of this appeal are found in this paper, and they will be adjusted as more information is gathered and the situation develops.

[<click here to view the attached Emergency Appeal Budget; here to link to a map of the affected area; or here to view contact details>](#)

The situation

An earthquake measuring 7.2 on the Richter scale struck the province of Van in eastern Turkey at 13:41 local time on Sunday, 23rd October 2011. According to the initial assessment made immediately after the quake, 461 people died and more than 1,352 people were injured. Assessments so far also show that 2,262 buildings have been destroyed. Search and rescue efforts are ongoing round the clock.

According to Turkish Disaster and Emergency Management official information released at 11.00 a.m. on 24.10.2011, the following resources have been deployed in the emergency areas: 2,398 search and rescue teams from 45 provinces to Van; 680 health personnel; 12 search and rescue dogs; 355 rescue machinery; 7 air ambulances; 101 land ambulances; 30 generators; 95 mobile toilets; 6,377 tents; 16,888 blankets; 11,184 food packages; 21 mobile kitchens; 1,719 kitchen sets; 3,812 heaters; 425 sleeping bags; 1 mobile oven.

Rescue Operations

The Turkish Disaster and Emergency Management Presidency (AFAD) informed that more than 1,275 search & rescue and health officials were sent to Van from 45 provinces and 37 different institutions. A technical committee of 20 AFAD personnel arrived in the region, and 200 technical staff from different provinces have also been assigned. AFAD has assigned one coordinator and personnel in each of the following airports: Ankara Esenboğa, İstanbul Atatürk and İzmir Adnan Menderes in order to organize search and rescue (SAR) teams, medical and first aid personnel, and in-kind aid.

Shelter

Tents, blankets, sleeping bags and heaters have been dispatched and distributed in the disaster-affected area to cover the need for emergency shelter. Turkish Red Crescent Disaster response teams established two tent camps in the stadiums in the Erçis District of Van. 260 families have been sheltered in these camps after the erection of 260 tents was completed. The distribution of blankets and 118 heaters was completed in these two camps. Mobile Kitchens are operational in these tent camps and catering hot meal for the affectees. Additionally, 2 inflatable tents and 2 warehousing tents were erected in these sites for the accommodation of staff and storage of relief items. Another tent camp was established in Van City Center with the erection of 232 tents.

Health and Food

The Ministry of Health (MoH) emergency centre, SAKOM (Turkish MoH Disaster and Emergency Coordination Centre) is activated 24/7, following up the response operations at national and peripheral levels under the responsibility of Prof Nihat Tosun, Undersecretary of the Ministry of Health, and Mr Agah Kafkas, Deputy Minister of Health. Injured people are receiving medical care in Van, Erçis and other neighbouring provinces. Medical rescue teams from Van and other provinces started operations at the site immediately after the earthquake. The MoH sent 6 helicopter ambulances, 4 plane ambulances, and 201 land ambulances. At present, 48 medical rescue teams and 1,197 health care staff including 163 specialist doctors sent from neighbouring provinces are working in the region. The MoH is keeping ready more than 1,700 hospital beds in Ağrı, Erzurum, Bitlis, Diyarbakır, Muş, Iğdır and Ankara for further evacuations. Food items have been sent by different sources, including provinces around Van. The Turkish Red Crescent is already distributing hot food to the affected population.

Public Services

It has been announced by the local authorities that the schools and the university remain closed for periods between 3 days and one week. The government has called on the private sector to provide cranes to remove the debris, which was well received and responded to. Electricity and phone lines which were cut following the earthquake are now back to normal.

Coordination and partnerships

The Turkish Red Crescent acts as an auxiliary to all public services, responsible for intervention in the event of disasters, in conjunction with bodies such as Disaster and Emergency Management Presidency, the fire department and health services. During emergencies, the National Society coordinates with Disaster and Emergency Management Presidency to provide assistance when required.

All activities in the field are being coordinated at the central level of the Turkish Disaster and Emergency Management Presidency. The Turkish Red Crescent is part of this response structure and has been involved in the work of the headquarters from the beginning.

The Turkish Red Crescent Society has launched a national fundraising campaign, and it is anticipated that there will be a good response nationally. This International Federation appeal aims to complement support being raised within the country as an expression of international concern and solidarity with those affected by this massive disaster.

The Iranian Red Crescent urgently deployed their teams and relief items (300 tents, 1,500 blankets and 2,500 ready-to-eat packages) to the field, and with the consent of the Turkish Red Crescent Society, the teams of the Iranian Red Crescent have started to work in close cooperation with the teams of the Turkish Red Crescent. The activities are based on the bilateral cooperation between Turkish Red Crescent branches and the Iranian Red Crescent that was already in place before the earthquake.

The International Federation's Europe Zone office has been in communication with the Turkish Red Crescent from the beginning of the disaster. The Federation has been in touch with the ICRC in order to coordinate activities and activate the Restoring of Family Links (RFL) service to assist the affected families. The International Federation will be coordinating with other institutions and organizations involved in humanitarian aid. This coordination is vital in the early stages to avoid overlap and to ensure standardization in response and its quality, guaranteeing dignified humanitarian action in accordance with the needs of the affected Turkish population. An agreement will be concluded between the Europe Zone Office and the Turkish Red Crescent on roles and responsibilities for coordinating their activities internally and externally during the operation.

Red Cross and Red Crescent action

The Turkish Red Crescent, immediately after having been informed of the disaster, alarmed all its units in the country and established its Crisis Management Desks in the Disaster Management Centre (HQ) (Ankara), the Northern Anatolia (Erzurum), the South-eastern Anatolia (Elazığ), the Eastern Anatolia (Muş), and the Mediterranean (Adana) Regional Disaster Management Centres and Sivas and Diyarbakir Local Disaster Management Centres. In the aftermath of the earthquake, 5 staff from Elazığ Regional Disaster Management Centre, 2 staff from Muş Disaster Management Centre and 3 staff from Erzurum Regional Disaster Management Centre have been deployed in Van Province in order to make needs assessments.

For the purpose of preliminary damage assessments in the closest districts and villages to the epicentre of the quake, information is being collected through the Turkish Red Crescent Branch Offices, District Governorates, Gendarmerie Commands, Security Departments in the town and cities, coordinated by the Disaster Management Centre (HQ). The consignment of relief items, vehicles, equipment and staff, primarily from Muş, Elazığ, Erzurum, Adana, Manisa, Ağrı and Van and all other Turkish Red Crescent units were initiated.

Within the scope of the response activities, the Turkish Red Crescent Society alarmed all its units in the country in order to meet the urgent shelter and food needs of the victims, and dispatched the relief items from Ankara, Elazığ, Erzurum, Adana, Muş and Manisa Regional Disaster Management Centres and also deployed 129 disaster specialists, 37 vehicles. Turkish Red Crescent Society also deployed volunteers, composed of mukhtars, clergies, police forces and teachers that were trained within the framework of the project on "Organizing Community Leaders" for this kind of disaster situations.

Sheltering Activities: Tents, blankets, sleeping bags and heaters have been dispatched and distributed in the disaster-affected area to cover the need for emergency shelter. Turkish Red Crescent disaster response teams established two tent camps in the stadiums in the Erçis District of Van. 260 Families has been sheltered in these camps. The distribution of blankets and 118 heaters was completed in these two camps. Mobile Kitchens are operational in these tent camps and catering hot meal for the affectees. Additionally, 2 inflatable tents and 2 warehousing tents were erected in these sites for the accommodation of staff and storage of relief items. Another tent camp was established in Van City Center with the erection of 232 tents.



Nutrition Activities: In the first day of the disaster, ready-to-eat snacks were distributed to the victims of the earthquake. Besides, 1 mobile bakery, 21 mobile kitchen and 2,619 kitchen sets have been dispatched. A professional staff of the Turkish Red Crescent Society started to provide hot meals through the mobile kitchens that are dispatched to the region. Turkish Red Crescent catering vehicles have distributed soup and tea to the affectees.

Psycho-social Support Activities: Psychologists and social service specialists were assigned to the disaster affected regions with the aim of providing psycho-social support for the victims who lost their relatives and for the victims who have experienced post-traumatic stress disorder because of the shock caused by the quake.

Blood Donation Services: Turkish Red Crescent Regional Blood Center based in Van communicated immediately with hospitals in the affected area and created additional stocks of blood in the Hospitals. Level of blood stocks was heightened with the transportation of 350 units of blood, especially of negative blood group from Erzurum Regional Blood Center one hour after the earthquake. After the re-opening of the airport, a total stock of 18,000 units of erythrocyte suspension was sent to Van from other regional blood centers for the purpose of stock replenishment. Stocks of blood have been continuously replenished when they fall below 1000 units. Erzurum and Ankara Regional Blood Centers are also creating additional blood stocks for the replenishment of stocks in the affected areas in case of need.

The needs

The Turkish Red Crescent has carried out initial needs assessments and has identified several priorities for its work in close consultation with other actors

Immediate needs: Assistance to beneficiaries in temporary accommodation (provision of blankets, sleeping bags, and winterised tents) for up to 50,000 people. Other forms of providing emergency shelter, such as support to host families, collective centres or rental support will be considered as the operation moves to a transitional phase.

Beneficiary selection: The Turkish Red Crescent will in its efforts be focusing on the most vulnerable population that is the population with the least capacity to recover. The Turkish Red Crescent will identify the population most in need and provide assistance to them after the second needs assessment is finished. The assessment will show what the split will be between urban and rural areas, both of which have specific challenges.

Shelter: The number of buildings heavily damaged reached 2,262, if we assume that each building has 5 stories on average, and that each storey has two apartments, we can estimate the number of family rendered homeless at 50,583 families (252,000 people). These displaced people are now living in tents and makeshift shelters in other cities and towns in neighbouring counties and provinces. Conditions for thousands of survivors living in makeshift tents are worsening with the rain and the falling winter temperatures. Many people are also sleeping outdoors, even in the snow, too terrified by the frequent aftershocks, a lingering reminder of all they have witnessed and lost.

The proposed operation

Relief distributions (food and basic non-food items)	
Outcome: text (bold) 50,000 vulnerable people residing in temporary accommodation will have received urgent relief items (blankets, sleeping bag)	
Outputs (expected results)	Activities planned
The needs of 50,000 people residing in temporary accommodation for 9 months will be met through provision of adequate relief items.	<ul style="list-style-type: none"> • Conduct detailed emergency needs and capacity assessments. • Develop beneficiary targeting strategy and registration system to • Deliver intended assistance. • Distribute relief supplies and control supply movements from Point of dispatch to end user. • Develop an exit strategy. • Monitor and evaluate the relief activities and provide reporting on relief distributions.

This objective responds to the initial needs identified in the assessments. The Turkish Red Crescent Society and International Federation will provide basic non-food items (NFIs) to 10,000 households (50,000 people) in a coordinated manner.

Emergency shelter	
Outcome: Ensure that the most vulnerable families have a healthy, safe and dignified shelter solution to preserve their physical and mental well-being and prevent the further deterioration of the humanitarian situation.	
Outputs (expected results)	Activities planned
Up to 10,000 households receive shelter solutions to assist their recuperation.	<ul style="list-style-type: none"> • Conduct rapid emergency needs and capacity assessments. • Develop a community and beneficiary targeting strategy in coordination with local authorities and institutions. • Assess the extent of the shelter needs and preferred shelter solutions employing local suppliers when possible. • Provide appropriate emergency and transitional shelter solutions in coordination with local and regional authorities, universities, professional associations and the affected population. • Develop awareness raising activities on safe shelter and Disaster Reduction (DRR) in coordination with TRCs and local authorities. • The mobilization (including transportation and distribution) of 10,000 family tents through in-kind donations /local and international procurement, • Logistics technical support following International Federation standard operating procedures for TRCS tracking, documentation distribution (1,000 – 2000 tents per day) • Monitoring

This objective will guarantee that up to 10,000 households (50,000 people) have access to healthy, safe and dignified emergency or transitional shelter solutions, thus assisting in the recovery of their comprehensive well-being. This objective will be implemented with the distribution of the non-food items mentioned in the relief

objective and accompanied with water and sanitation and hygiene promotion actions (lead by Turkish RC and not reflected in this Emergency Appeal).

Further information regarding beneficiary numbers and targeting strategy in the affected region as well as future plans for the transition of the people to more durable structures will be supplied from the very beginning.

Logistics

Outcome: The most urgent and relevant humanitarian goods are mobilised, delivered and distributed timely, transparent and cost-efficient manner following the standard logistics procedures	
Outputs (expected results)	Activities planned
<ul style="list-style-type: none"> • Coordinated mobilization of relief items for 10,000 families; • Well managed reception of all incoming goods; • Cost and time efficient procurement of relief items and logistics services as required; • Safe and effective receipt, storage and despatch of warehoused goods; • Cost effective use of transport services procured for the movement of goods • Centralized provision of standard vehicles as required; • Coordinated and efficient dispatch of goods to the final distribution points 	<ul style="list-style-type: none"> • Turkish Red Crescent Society and GLS work together to design and set-up a supply chain to effectively control the movement of goods from point of dispatch to final distribution point including storage throughout as required. • Monitor and evaluate the supply chain and provide reporting on performance. • In-kind donation Mobilisation and procurement at international level will be coordinated by the Federation Global Logistics Service in agreement with the Turkish Red Crescent Society. • Vehicle fleet activities & requirements coordinated through Global Logistics Service • Liaise and coordinate any other appropriate key actors to ensure that the IFRC logistics operation uses all available information to be as efficient and effective as possible. • Contribute to the longer term supply chain planning as required.

In order to ensure efficient Logistics support and coordination of Mobilisation, Global Logistics Service will reinforce Logistics capacity within Budapest Zone. Additional Logistics resources will be made available to be deployed to Turkey at the request of the National Society.

A detailed and up-to-date mobilization table will be available on the International Federation's Disaster Management Information System (DMIS)¹. The International Federation will be working on mobilizing specific relief items to respond to needs in the field, and donors must coordinate with the Global Logistics Service (contact details at the end of Appeal) regarding outstanding needs and updated shipping instruction.

Communications – Advocacy and Public information

The Turkish Red Crescent Society continues to provide timely and accurate information on its relief actions to national and international institutions and media. Maintaining a steady flow of timely and accurate information between the field and other major stakeholders is vital for fundraising, advocacy and maintaining the profile of emergency operations. During an operation, communications between affected populations and the Red Cross Red Crescent Movement, as well as with media and donors, is an essential mechanism for effective disaster response and the cornerstone to promote greater quality, accountability, and transparency.

The communications activities outlined in this appeal are aimed at supporting the Turkish National Society to improve their communications capacities and develop appropriate communications tools and products to support effective operations. These activities are closely coordinated by the media relations officer at the Turkish Red Crescent and the communications department of the International Federation's Secretariat in Geneva and the Europe Zone Office in Budapest. Updated press releases, stories, and photos are available online at www.ifrc.org.

¹ https://www-secure.ifrc.org/DMISII/Pages/03_response/0307_logistics_mobTab.aspx

Capacity of the National Society

Since the 1999 earthquake operation, Turkish Red Crescent Society has grown immensely and acquired new capacities. These capacities include expertise in relief, shelter and livelihoods. The national society headquarters have experienced and dedicated staff on Disaster Management as well as a Disaster Crisis centre.

Capacity of the IFRC

The International Federation Secretariat through its Zone Office in the Europe (Budapest) is providing support to the Turkish National Society in the response to the needs such as organizing the provision of initial relief items, development of Plans of Action, logistics and human resources. Global surge capacity is being utilized to meet the need for additional operational support, provided through partner National Societies.

Budget summary

See attached budget (Annex 1) for details.

Bekele Geleta
Secretary General

Mathias Schmale
Under Secretary General, Programme Services

Contact information

For further information specifically related to this operation please contact:

- **In Turkey:** Aydın Özdemir, Disaster management, Turkish Red Crescent Society, phone: +90 5543409874; email: aydino@kizilay.org.tr
- **In Turkey:** Gülçin Dikbaş, Turkish Red Crescent Society, phone: +90 5365985050; email: gulcin.diktas@kizilay.org.tr
- **IFRC Zone:** Evgeni Parfenov, Head of Operations, IFRC Europe Zone, Budapest, phone: +3618884500, email evgeni.parfenov@ifrc.org
- **IFRC Zone:** Slobodanka Curic, Disaster Management Coordinator, IFRC Europe Zone, Budapest, phone: +361 8884 510; fax: +36 1 336 1516; email: slobodanka.curic@ifrc.org
- **IFRC Zone,** in Budapest, for mobilization and coordination of relief items: Mikhail Chitashvili, phone: +41 22 730 43 05, mobile phone: +41 79 203 46 20; email: Mikhail.chitashvili@ifrc.org
- **In Geneva:** Christine South, Operations Support, phone: +41.22.730.4529, email: christine.south@ifrc.org

For Resource Mobilization and Pledges:

- **IFRC Zone:** Lourdes Perez, Resource Mobilization Coordinator, phone: +36 (1) 888-45-29; Fax: +36 (1) 336-15-16; email: Lourdes.perez@ifrc.org

For Performance and Accountability (planning, monitoring, evaluation and reporting enquiries)

- **IFRC Zone:** Imre Nagy, Planning and Reporting Manager, Budapest, phone: +36 1 8884 526, email: imre.nagy@ifrc.org



Click [here](#)

1. Emergency Appeal budget and map [below](#)
 2. Click [here](#) to return to the title page
-

How we work

All IFRC assistance seeks to adhere to the Code of Conduct for the International Red Cross and Red Crescent Movement and Non-Governmental Organizations (NGO's) in Disaster Relief and the Humanitarian Charter and Minimum Standards in Disaster Response (Sphere) in delivering assistance to the most vulnerable.

The IFRC's vision is to inspire, encourage, facilitate and promote at all times all forms of humanitarian activities by National Societies, with a view to preventing and alleviating human suffering, and thereby contributing to the maintenance and promotion of human dignity and peace in the world.



The IFRC's work is guided by Strategy 2020 which puts forward three strategic aims:

1. Save lives, protect livelihoods, and strengthen recovery from disaster and crises.
 2. Enable healthy and safe living.
 3. Promote social inclusion and a culture of non-violence and peace.
-

EMERGENCY APPEAL

26/10/2011

MDRTR002 Turkey Earthquake - Preliminary Emergency appeal

Budget Group	Multilateral Response	Inter-Agency Shelter Coord.	Bilateral Response	Appeal Budget CHF
Shelter - Relief	4,000,000			4,000,000
Shelter - Transitional				0
Construction - Housing				0
Construction - Facilities				0
Construction - Materials				0
Clothing & Textiles	4,800,000			4,800,000
Food				0
Seeds & Plants				0
Water, Sanitation & Hygiene				0
Medical & First Aid				0
Teaching Materials				0
Ustensils & Tools				0
Other Supplies & Services				0
Emergency Response Units				0
Cash Disbursements				0
Total RELIEF ITEMS, CONSTRUCTION AND SUPPLIES	8,800,000	0	0	8,800,000
Land & Buildings				0
Vehicles Purchase				0
Computer & Telecom Equipment				0
Office/Household Furniture & Equipment				0
Medical Equipment				0
Other Machinery & Equipment				0
Total LAND, VEHICLES AND EQUIPMENT	0	0	0	0
Storage, Warehousing	150,000			150,000
Distribution & Monitoring	550,000			550,000
Transport & Vehicle Costs	100,000			100,000
Logistics Services				0
Total LOGISTICS, TRANSPORT AND STORAGE	800,000	0	0	800,000
International Staff	20,000			20,000
National Staff	20,000			20,000
National Society Staff				0
Volunteers	50,000			50,000
Total PERSONNEL	90,000	0	0	90,000
Consultants				0
Professional Fees				0
Total CONSULTANTS & PROFESSIONAL FEES	0	0	0	0
Workshops & Training				0
Total WORKSHOP & TRAINING	0	0	0	0
Travel	20,000			20,000
Information & Public Relations	25,000			25,000
Office Costs				0
Communications	50,000			50,000
Financial Charges				0
Other General Expenses				0
Shared Support Services				0
Total GENERAL EXPENDITURES	95,000	0	0	95,000
Partner National Societies				0
Other Partners (NGOs, UN, other)				0
Total TRANSFER TO PARTNERS	0	0	0	0
Programme and Supplementary Services Recovery	636,025	0	0	636,025
Total INDIRECT COSTS	636,025	0	0	636,025
TOTAL BUDGET	10,421,025	0	0	10,421,025
Available Resources				
Multilateral Contributions				0
Bilateral Contributions				0
TOTAL AVAILABLE RESOURCES	0	0	0	0
NET EMERGENCY APPEAL NEEDS	10,421,025	0	0	10,421,025



Mobilization table report

Appeal code : MDRTR002
Appeal name : Turkey - Van Earthquake

OU name : International Federation of Red Cross and Red Crescent Societies
Report date : 26/10/11 15:42

Commodity	UOM	Total quantity needed	Unit price (CHF)	PTR009 TR	Donor	CTN	PO/IKD no	IKD status	Solicitation status	Remarks	Estimated total cost (CHF)	Estimated outstanding cost (CHF)
Inside appeal items												
HSHEBLANWHT1	Pce	50000	9.00	50000							450000.00	450000.00
BLANKET, woven, 80% wool, 1.5x2m, high thermal resistance												
Outstanding		50000		50000					Coverage		0%	
HSHESLEBWI	Pce	50000	50.00	50000							2500000.00	2500000.00
SLEEPING BAG, for indoor use, cold climate												
Outstanding		50000		50000					Coverage		0%	
HSHEZFCH0009	Pce	10000	365.00	10000							3650000.00	3650000.00
TENT, FAMILY, Winterised type												
Outstanding		10000		10000					Coverage		0%	
Total cost											6600000.00	6600000.00

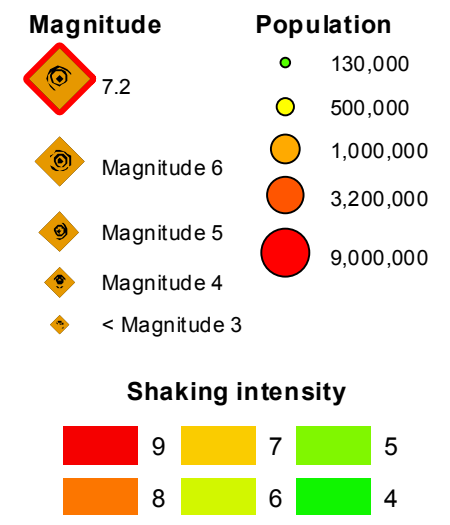
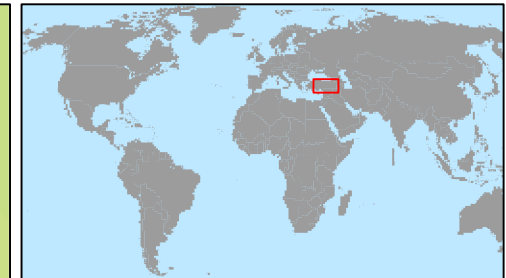
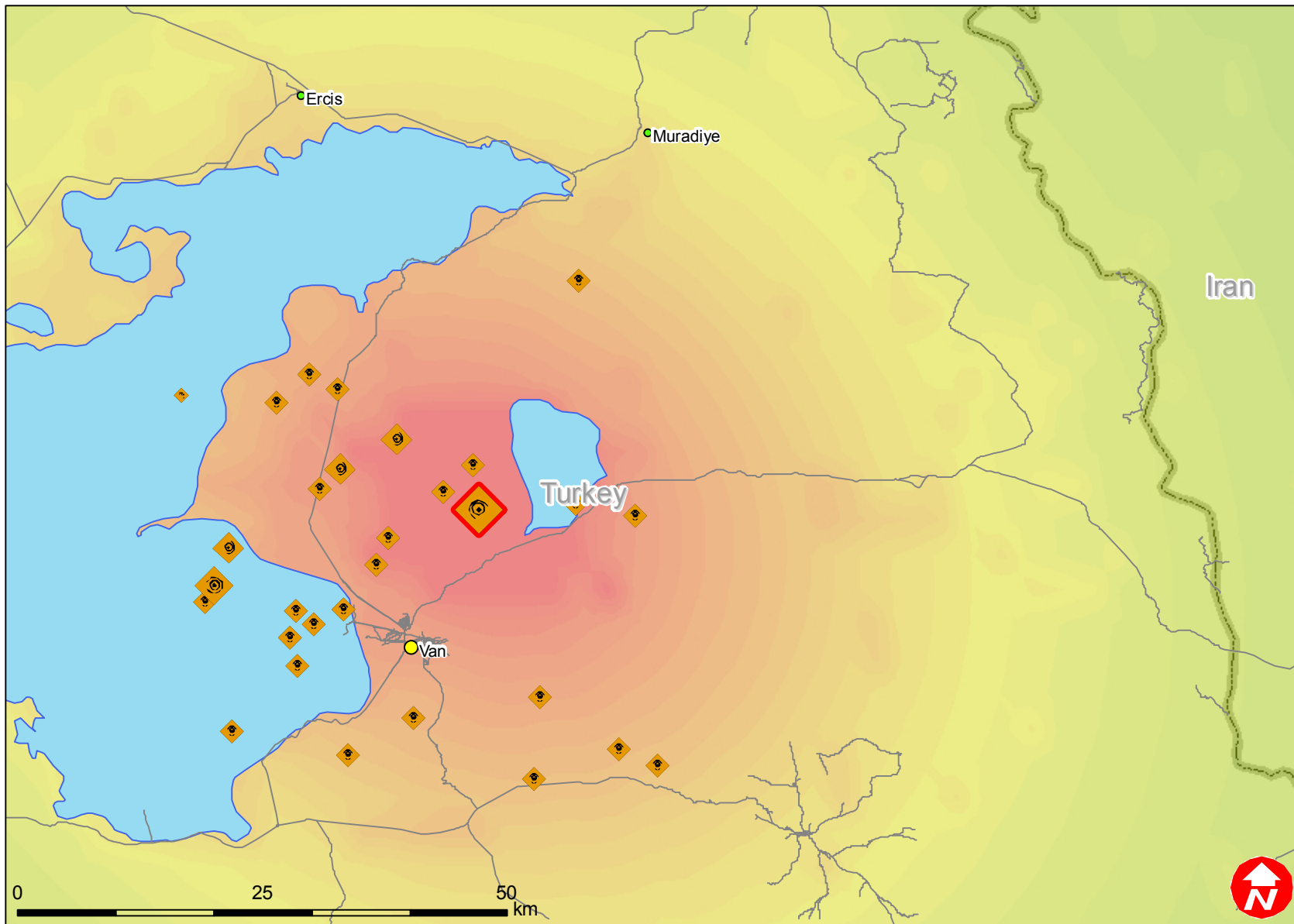
Notes :
1. Outstanding and Coverage calculations do not include item quantity and costs of borrowed In Kind Donations, if any.
2. color indicates borrowing type of donation.
3. Transportation costs will be additional. Amount indicated only covers cost of Goods.
Logistics and Resource Mobilization Department

The Federation works on mobilizing specific relief items to respond to needs in the field and donors should coordinate with Mikahil Chitashvili regarding outstanding needs. Shipping Instructions will be provided to donors with a consignment tracking number (CTN) which will be issued before shipping any goods to the operation. For mobilization of relief items please contact:

GSL Contact, Budapest:
Mikhail Chitashvili, Senior Procurement Officer – Global Logistics Service
Mobile Number: +41 79 203 4620
Email: mikhail.chitashvili@ifrc.org



Turkey: Earthquake



The maps used do not imply the expression of any opinion on the part of the International Federation of Red Cross and Red Crescent Societies or National Societies concerning the legal status of a territory or of its authorities.
 Map data sources: ESRI, DEVINFO, USGS, OSM, International Federation