


www.ifrc.org  
Saving lives,  
changing minds.

## Emergency appeal Guatemala: Floods

 International Federation  
of Red Cross and Red Crescent Societies

**Emergency appeal n° MDRGT003**  
**GLIDE no: [TC-2011-000157-GTM](#)**  
**26 October 2011**

This Emergency Appeal seeks 786,728 Swiss francs in cash, kind, or services to support the Guatemalan Red Cross (GRC) to assist 1,500 families for 9 months, and will be completed by the end of July 2012. A Final Report will be made available by October 2012, three months after the end of the operation.

240,190 Swiss francs were allocated from the International Federation of Red Cross and Red Crescent (IFRC) Disaster Relief Emergency Fund (DREF) to support this operation. Unearmarked funds to replenish DREF are encouraged.

As Tropical Depression 12-E moved inland near the Mexican / Guatemalan border, severe precipitations fell across Central America, affecting more than 500,000 persons in Guatemala. With some 21,000 persons in collective centres and 28,000 in risk-prone areas, the Guatemalan government declared a State of Public Calamity. Given the situation, this Emergency Appeal responds to the request of the Guatemalan Red Cross which will provide assistance to 1,500 families in the sectors of relief distributions, emergency health, water and sanitation, and early recovery.



**1,200 Guatemalan Red Cross (GRC) volunteers have been called upon to support the humanitarian response efforts, and are conducting search and rescue activities and providing pre-hospital care. Source: GRC**

**[<Click here to view the attached Emergency Appeal Budget; here to link to a map of the affected area; or here to view contact details>](#)**

## The situation

Over the week beginning 10 October 2011, Tropical Depression 12-E (TD12-E) started to form in the Gulf of Tehautepec, Mexico, 220km offshore from Salina Cruz, state of Oaxaca, with maximum sustained winds of 55kmph. Furthermore, a broad area of low pressure including the remnants of Tropical Depression 12-E affected all Central America with intense rainfall. On 13 October 2011, TD 12-E moved inland near the Mexican / Guatemalan border. Severe precipitations caused flooding and landslides in Guatemala, as the soil was already saturated and river levels were high as a result of previous rains. The Guatemalan government decreed a State of Public Calamity on 16 October.

The most affected departments thus far are: Chimaltenango, El Progreso, Escuintla, Guatemala, Jalapa, Jutiapa, Petén, Quetzaltenango, Retalhuleu, San Marcos, Santa Rosa, Sololá, Suchitepéquez and Totonicapán. Several areas of Quetzaltenango city are flooded and the electricity service has been disrupted in several municipalities of the Sololá department. At the moment, there are 172 collective centres open. Official government figures from the National Coordinating Body for Risk Reduction (Coordinadora Nacional para la Reducción de Desastres, CONRED) as of 21 October 2011 are as shown below; however, figures are rapidly changing.

Affection	N° of people
Deaths	39
Missing	4
Injured	18
Persons in collective centres	21,451
Severely affected persons	82,913
Total no. affected persons	550,752
Persons still at risk	28,340

Source: [CONRED, bulletin No. 2204](#) – Data as of 21 October 2011.

In the housing sector, authorities report 16,609 homes with minor damage, 5,571 with moderate damage, 753 with severe damage, and 5,291 homes are still at risk. In addition, the national road network is severely damaged, with estimates indicating 167 sections of roads affected and 9 destroyed, while 55 bridges are damaged and 30 are destroyed. In addition, 26 schools have incurred damages and classes have been suspended in 14 departments (of 22 departments). Soils are heavily saturated increasing the possibility for landslides.

Damage to the agricultural sector is also evident with 6,250 hectares of crop areas affected due to the floods. The Ministry of Agriculture, Livestock and Food (Ministerio de Alimentación, Ganadería y Alimentación, MAGA) reports losses of 73 million Quetzales (more than 8 million Swiss francs) with 14,900 families affected as a result of crops lost in 111 municipalities, particularly in the municipalities of Chimaltenango and Quetzaltenango.

Thus far, the Ministry of Public Health and Social Support reports some preliminary damages to the health infrastructure, with some health centres affected in Petén and Alta Verapaz which are departments with a high concentration of K'iche' indigenous population. The population could be affected by an increase in respiratory, gastrointestinal, dermatological diseases and dengue as well as experience negative psychological effects. The number of people in collective centres is also rising, which results in higher exposure to diseases. Furthermore, in some areas flood waters have contaminated water wells, which hinders access to safe water in the affected communities. The Pan-American Health Organization (PAHO) reports as of 24 October that: there are limited stocks of medicines and health care supplies available; some health centres do not have methods for external communication; poor hygiene conditions in collective centres and limited access to basic services such as water, sanitation, food and psychosocial support.

## Coordination and partnerships

At the national level, the Guatemalan Red Cross actively coordinates with the Executive Secretariat of CONRED, through the inter-institutional linkages which provide information to CONRED's Emergency Operations Centre (EOC). In addition, the National Society maintains coordination with the Humanitarian Network of Guatemala, which includes international organizations and UN system agencies, to integrate response efforts. The Humanitarian Network has designated lead agencies for the different technical sectors as follows:

- Coordination – OCHA and the Humanitarian Network
- Health – Pan American Health Organization (PAHO)
- Water and Sanitation – UNICEF
- Food – World Food Programme (WFP)
- Shelter – International Organization for Migration (IOM)
- Education – Plan International
- Early Recovery – UNDP
- Livelihoods – FAO

The European Commission of Humanitarian Aid and Civil Protection (ECHO) has started conversations with partners in the country to analyze possible financial support through their emergency fund.

At the local level, the GRC's National Intervention Team (NIT) members working in the affected areas are part of the Incident Command System (Sistema de Comando de Incidentes) and the Disaster Reduction Coordinating Bodies at the department and municipal levels.



Volunteers are also working in the collection centre opened in the Guatemalan Red Cross (GRC) headquarters. Source: GRC

## Red Cross and Red Crescent action

On 12 October, the Guatemalan Red Cross declared an institutional red alert, in line with CONRED, and activated its Emergency Operations Centre (EOC) to establish communication with all the 20 GRC branches across the country. The EOC is gathering, analyzing and sharing information to inform decision-making during the response activities. More than 1,200 Guatemalan Red Cross volunteers are supporting the humanitarian response efforts. Volunteers are trained in several technical areas including: search and rescue, pre-hospital care, NIT training (specialized in water and sanitation, hygiene promotion and emergency health), damage and needs assessments, EOC management, management of collective centres and relief aid.

Since the onset of the emergency, GRC branches and volunteers are conducting search and rescue activities, providing first aid care, setting up collective centres and assisting families to re-establish contact with their relatives. Branches located in the departments most affected by TD 12-E

have conducted preliminary damage and needs assessments. Further assessments will be carried out in coordination with local authorities in order to evaluate other affected communities. Seventeen branches have been involved actively in response activities since the onset of the emergency, including: Chiquimula, Coatepeque, Concepción Chiquirichapa, El Estor, El Palmar, Jalapa, Mazatenango, Petén, Quetzaltenango, Tecún Umán, Quiché, Serchil, Purulhá, Tejutla, Retalhuleu, Sacapulas and Guatemala. A collection centre is open in the GRC's headquarters and bank accounts are available for donations. Furthermore, the GRC mobilized 1,000 hygiene kits and 850 food parcels to the branches in the south and west departments of the country to assist people sheltered in collective centres.

In country, the International Red Cross and Red Crescent Movement partners continue to have coordinating meetings, supporting the GRC's headquarters and branches in line with the Guatemalan Red Cross's Plan of Action to respond to this emergency, which aims to assist 3,000 affected families. The International Committee of the Red Cross (ICRC) is supporting with restoration of family links; the Norwegian Red Cross with water distribution; and the Spanish Red Cross with distribution of relief items to 1,200 families. The Netherlands Red Cross is negotiating the possibility of further supporting the GRC's Plan of Action through an ECHO proposal.

Furthermore, the International Federation of Red Cross and Red Crescent Societies (IFRC) is following up on the situation and coordinating with the National Society in order to better support the response needs identified in its Plan of Action. The IFRC maintains constant communication with the National Society through the regional representation for Central America and Mexico in Costa Rica, and the Pan American Disaster Response Unit (PADRU) of the Americas zone office in Panama.

## The needs

### Beneficiary selection:

The current plan of action of the GRC complements the ongoing activities of rescue, evacuation and first aid care. A target population of 3,000 families has been selected based on the Fundamental Principles of the International Red Cross and Red Crescent Movement and will prioritize those affected areas that had already been identified as the most vulnerable through ongoing health and risk reduction programmes. The Emergency Appeal will reach 1,500 families from the following areas:

Department	No. of families
Retalhuleu	800
Santo Tomás de Castilla	200
Cobán	200
Petén	300
<b>Total</b>	<b>1,500</b>

**Immediate needs:** the most immediate need is to continue evacuating families living in affected or at-risk areas, providing first aid care and supporting collective centres as they are opened. Families in these centres are also requiring food, access to safe water and humanitarian aid items such as jerry cans, blankets and kitchen sets. In order to reduce health risks and detrimental impacts to the communities, hygiene kits and mosquito nets are also needed.

**Medium and longer-term needs:** as thousands of families lost their crops, the affectation of livelihoods and food security is a concern; therefore, early recovery activities will be needed. Furthermore, although the health infrastructure did not incur major damages, the reduction of health risks and promotion of health care within collective centres also needs to be addressed.

## The proposed operation

This emergency appeal will support part of the overall GRC's Plan of Action that seeks to reach a total of 3,000 families. The operation will focus on 1,500 of the most affected families in the departments of Retalhuleu, Santo Tomás de Castilla, Cobán and Petén to complement ongoing humanitarian action by the government and other organizations in neighbouring provinces. Special attention will be given to the most vulnerable households, including those with young children, elderly adults and families otherwise additionally challenged. The first weeks of the operation will focus on the immediate needs, providing food, first aid care, including psychosocial support, and basic non-food relief items. In a second phase, the GRC will continue with health activities aiming at preventing diseases in affected communities, as well as supporting the recovery of livelihoods.

In order to successfully continue with the humanitarian response, some branches of the National Society will also receive equipment and training for their volunteers.

### Relief distributions (food and basic non-food items)

Outcome: The immediate needs of 1,500 families affected by Tropical Depression 12-E are met through the distribution of food items and non-food items.	
Outputs	Activities planned
1,500 families (7,500 people) receive food parcels and blankets.	<ul style="list-style-type: none"> <li>Develop beneficiary selection and registration system to deliver intended assistance.</li> <li>Procure locally humanitarian relief items.</li> <li>Distribute food parcels (1 time distribution for all target families)</li> <li>Distribute 5 blankets per family (based on an average family of five members)</li> </ul> Monitor and evaluate the relief activities and provide reporting on relief distributions.

In an effort to contribute to the food security of affected families, the National Society will distribute one food parcel per family. This food parcel was designed to assist a household of five members for one month and contains the following items:

- 30 pounds of corn flour
- 30 pounds of beans
- 20 pounds of rice
- 1 gallon of oil
- 2 pounds of salt
- 5 pounds of sugar
- 5 pounds of Incaparina, a protein-rich dietary supplement

### Emergency health

<b>Outcome: the health risks in the emergency affected population are reduced in the medium and long term through a strategy based on a community health approach.</b>	
<b>Outputs</b>	<b>Activities planned</b>
<b>Rapid Health Assessments (RHA) are carried out to understand the health situation and immediate risks.</b>	<ul style="list-style-type: none"> <li>• Ensure the development and maintenance of inter-institutional coordination.</li> <li>• Assess the health situation within the affected population in coordination with the Ministry of Health.</li> <li>• Review and update inventories of equipment and medical supplies.</li> </ul>
<b>Affected population has access to first aid services.</b>	<ul style="list-style-type: none"> <li>• Distribute fully equipped first aid kits to 10 branches.</li> <li>• Provide first aid care to the affected population.</li> </ul>
<b>At least 80 per cent of the population targeted in the emergency appeal are reached with epidemic prevention and control measures.</b>	<ul style="list-style-type: none"> <li>• Distribution of mosquito nets to 1,500 families.</li> <li>• Carry out a workshop for target families focusing on the appropriate use and care of mosquito nets.</li> <li>• Train health National Intervention Teams through the Epidemic Control for Volunteers (ECV) tool kit.</li> <li>• Implement educational activities to prevent health risks in communities.</li> </ul>
<b>HIV and AIDS, sexually transmitted diseases (STDs) prevention and essential management is provided to 2,500 persons.</b>	<ul style="list-style-type: none"> <li>• Conduct preventive actions to raise awareness at the level of collective centres and communities on STDs, HIV and AIDS, family planning and counselling.</li> <li>• Distribute condoms in collective centres and to the affected communities.</li> <li>• Carry out voluntary HIV counselling and testing.</li> </ul>
<b>At least 60 per cent of the population targeted in the emergency appeal are reached with psychosocial support.</b>	<ul style="list-style-type: none"> <li>• Train GRC volunteers in community based psychosocial support and psychological first aid.</li> <li>• Provide psychosocial support to targeted affected groups in communities and collective centres.</li> <li>• Monitor, evaluate and provide reporting on activities.</li> </ul>
<b>Emergency health interventions are linked to longer-term community health programmes.</b>	<ul style="list-style-type: none"> <li>• Conduct community-based health first aid training for volunteers (CBHFA)</li> <li>• Implement educational activities to promote behavioural change related to health care for the communities.</li> </ul>

In order to provide an integrated response, the activities of the emergency health sector, as well as those of the water, sanitation and hygiene promotion sector, will target the same 1,500 families to be reached with relief items. Therefore, to reduce the health risk of the population the National Society will not only provide information to affected communities, but also provide access to safe water and vector control measures.

To address medium to long term needs, National Intervention Team (NIT) health members will be trained using the Epidemic Control for Volunteers (ECV) tool kit. These NITs will be able later to better support the educational and promotional campaigns with the affected families in an effort to reduce health risks, particularly in relation to sexual and reproductive health and water related diseases. In addition, volunteers will be trained on methods to provide psychosocial support to strengthen resilience and coping mechanisms of family members. Finally, the GRC will seek a longer term approach by training volunteers in the Community-Based Health First Aid (CBHFA) methodology and implementing community activities to promote behavioural change related to health care.

### Water, sanitation, and hygiene promotion

<b>Outcome: The risk of waterborne and water related diseases is reduced through the provision of safe water, adequate sanitation as well as hygiene promotion within the population affected by Tropical Depression E-12.</b>	
<b>Outputs</b>	<b>Activities planned</b>
<b>1,500 families have access to safe water (through water filters and water treatment plants).</b>	<ul style="list-style-type: none"> <li>Assess the existing coverage of water supply and select the most vulnerable families in coordination with the established national mechanism.</li> <li>Distribute safe water to 600 families in collective centres and affected communities through water treatment plants.</li> <li>Clean affected wells.</li> </ul>
<b>1,500 families receive hygiene kits and jerry cans.</b>	<ul style="list-style-type: none"> <li>Procure and distribute hygiene kits, jerry cans and water filters.</li> </ul>
<b>At least 80 per cent of the population targeted in the emergency operation are reached with hygiene promotion and sanitation activities.</b>	<ul style="list-style-type: none"> <li>Conduct hygiene promotion talks to affected families.</li> <li>Conduct vector control activities (for dengue and malaria) to targeted affected groups in communities.</li> <li>Conduct monitoring and evaluation of activities.</li> </ul>

As previously mentioned, the 1,500 families targeted under the first and second outcomes (Relief distribution and emergency health) will also receive 3 jerry cans, 1 hygiene kit and 1 water filter in an effort to provide an integrated health approach. All these items, with the exception of the mosquito nets, will be procured locally.

In addition to distributing household water filters, the National Society will provide access to safe water to 600 families through the use of their water treatment plants in the areas of Cobán, Santo Tomás de Castilla, and Petén. However, for a longer term impact the GRC will clean some 300 wells serving affected communities. In addition, five communities affected by Tropical Depression 12-E will benefit with vector control activities, such as fumigations and cleaning of debris or mosquito breeding grounds near living areas, as well as the holding of educational workshops on the use and care of mosquito nets.

### Logistics

<b>Outcome: The local logistics capacity of the Guatemalan Red Cross to respond is strengthened with technical support for procurement and distribution.</b>	
<b>Outputs</b>	<b>Activities planned</b>
<b>Enhanced logistics capacity is achieved and technical support facilitates the procurement and distribution of relief items.</b>	<ul style="list-style-type: none"> <li>Purchase mosquito nets and non food items from the Regional Logistics Unit (RLU) as required.</li> <li>Provide technical support during the local procurement processes.</li> <li>Maintain stock levels in the El Salvador sub-regional warehouse to meet required demand in the region.</li> </ul>

The Regional Logistics Unit has the primary task of providing additional logistics capacity by:

- Assessment of logistics infrastructure, setting-up an efficient logistic system and identifying the best supply chain to support the operation.
- Carrying out receipt of relief goods shipped by air and sea and arranging transportation to distribution points.
- Liaison and coordination with other key actors to ensure best uses of all information.

## Early Recovery

<b>Outcome: Contribute to the early recovery of 500 families who have lost their livelihoods as a result of the floods.</b>	
<b>Outputs</b>	<b>Activities planned</b>
<b>500 families receive technical and material support to recover their agricultural production.</b>	<ul style="list-style-type: none"> <li>• Research and develop a technical assessment and intervention strategy in prioritized affected areas.</li> <li>• Establish mutual collaboration agreements with national institutions (agricultural associations and/or non-governmental organizations).</li> <li>• Establishment of a livelihoods cash transfer system.</li> <li>• Provide technical support.</li> <li>• Conduct monitoring and evaluation activities.</li> </ul>

As the Ministry of Agriculture reports losses of 73 million Quetzales (more than 8 million Swiss francs) with 14,900 families affected, the GRC will support 500 families to recover their lost livelihoods and contribute to the food security of vulnerable families. After a successful experience using a cash-transfer system for shelter activities during the emergency operation of Tropical Storm Agatha, the National Society is inclined to replicate the programme to provide families with resources to recover their agricultural production. Details on activities to be completed will be developed as further assessments are carried out.

The National Society's Plan of Action also includes activities to increase disaster preparedness and reduce the vulnerability of communities in risk-prone areas. However, the Guatemalan Red Cross is assessing the possibility of achieving this alongside the Netherlands Red Cross with possible funds from ECHO.

## Communications – Advocacy and Public information

In response to the emergency situation developing in the country, the Guatemalan Red Cross has conducted numerous interviews with print media, television and radio. The National Society was able to rehabilitate their website which is currently sharing all pertinent information regarding the emergency operation such as search and rescue activities. Thus far, the communications department has published two press releases and has facilitated media visits to the distribution centre located in their headquarters.

The department has also coordinated visibility campaigns at strategic points across the country, including the use of banners and presence at two presidential press conferences. Television and radio coverage has supported resource mobilization and fundraising is progressing. Spokespersons have been communicating with beneficiaries and media in different affected areas through the branches of the GRC. To ensure a steady flow of information on the coming weeks of the operation, the National Society will require support with equipment and human resources as the communication department is currently operating with one member of staff and one volunteer. Additionally, visibility materials for the volunteers working to provide humanitarian assistance will be needed to highlight their role in the response efforts.

Finally, the GRC is assessing mechanisms, such as the use of new communication tools, to strengthen the communication between headquarters and 20 branches in the affected regions.

## Capacity of the National Society

In 2010, the GRC responded to the damage caused by Tropical Storm Agatha. The theoretical and practical knowledge of emergency response and early recovery gained during this operation will contribute to the decision-making process of the current response. The National Society has more than 1,200 volunteers ready to support the response efforts, many specialized in several technical areas. Some 120 of these volunteers recently received training with the support of the emergency appeal in response to Agatha, including 67 new National Intervention Teams (NITs), of which 43 members were trained as water and sanitation NITs. Volunteers also gained knowledge in early recovery processes (24 volunteers) and in psychosocial support (29 volunteers).

During the current operation, the GRC will further increase the numbers of volunteers trained in technical areas. In addition to the workshops mentioned as part of the emergency health sector, the National Society will also train additional general NITs. Furthermore, 100 new volunteers will receive insurance coverage and

protective gear, while branches in affected areas will be supported with office and technical equipment to strengthen their emergency response capacity. Finally, at the end of this operation, the GRC will conduct an evaluation and lessons learned process to further gain knowledge from the experience.

### Capacity of the IFRC

The IFRC's Pan American Disaster Response Unit (PADRU) and the regional representation for Central America and Mexico continue to maintain constant communication with the Guatemalan Red Cross. In addition, an IFRC disaster management delegate and a communications officer are in Guatemala supporting this operation, and staff in the region are ready to provide assistance as requested by the National Society. Additionally, PADRU and the Regional Logistics Unit will continue to provide technical assistance, including training and dissemination of the new Sphere handbook, tendering and purchasing processes within the country. This support could include material and technical support for all of the planned outcomes as needed. Finally, the National Society is evaluating the possibility of implementing the new bar code distribution system implemented by the Mexican Red Cross and the IFRC in Haiti, in which case a Regional Intervention Team member will be deployed to provide support.

### Budget summary

See attached budget (Annex 1) for details.

Mathias Schmale  
Under Secretary General  
Programme Services Division

Bekele Geleta  
Secretary General

## Contact information

### For further information specifically related to this operation please contact:

- **In the Guatemalan Red Cross:**
  - Daniel E. Javiel Orellana, director general; phone: +502.238.16515; and email: [daniel.javiel@cruzroja.org.gt](mailto:daniel.javiel@cruzroja.org.gt)
  - Teresa J. Marroquín Ábrego, national disaster coordinator; phone / fax: +502.238.16536; and email: [teresa.marroquin@cruzroja.org.gt](mailto:teresa.marroquin@cruzroja.org.gt)
- **IFRC regional representation for Central America and Mexico in Costa Rica:** Fabricio Lopez, regional representative for Central America and Mexico; email: [fabricio.lopez@ifrc.org](mailto:fabricio.lopez@ifrc.org)
- **IFRC Americas zone office in Panama, phone: +317.3050**
  - Jorge Zequeira, PADRU coordinator; email: [jorge.zequeira@ifrc.org](mailto:jorge.zequeira@ifrc.org)
  - Douglas Baquero, regional logistics coordinator; email: [douglas.baquero@ifrc.org](mailto:douglas.baquero@ifrc.org)
  - Jane Grimshaw, PMER manager; email: [jane.grimshaw@ifrc.org](mailto:jane.grimshaw@ifrc.org)
- **In Geneva:** Pablo Medina, operations quality assurance senior officer; phone: + 41.22.730.4381; fax: + 41.22.733.0395; email: [pablo.medina@ifrc.org](mailto:pablo.medina@ifrc.org)

### For Resource Mobilization and Pledges:

- **In IFRC Zone:** Zuleyka Maynard, resource mobilization senior officer; email: [zuleika.maynard@ifrc.org](mailto:zuleika.maynard@ifrc.org); phone: (507) 66 732 026.





Click [here](#)

1. [Emergency Appeal budget and map below](#)
  2. Click [here](#) to return to the title page
- 

## How we work

All IFRC assistance seeks to adhere to the Code of Conduct for the International Red Cross and Red Crescent Movement and Non-Governmental Organizations (NGOs) in Disaster Relief and the Humanitarian Charter and Minimum Standards in Disaster Response (Sphere) in delivering assistance to the most vulnerable.

The IFRC's vision is to inspire, encourage, facilitate and promote at all times all forms of humanitarian activities by National Societies, with a view to preventing and alleviating human suffering, and thereby contributing to the maintenance and promotion of human dignity and peace in the world.

[www.ifrc.org](http://www.ifrc.org)

**Saving lives, changing minds.**



The IFRC's work is guided by *Strategy 2020* which puts forward three strategic aims:

1. Save lives, protect livelihoods, and strengthen recovery from disaster and crises.
  2. Enable healthy and safe living.
  3. Promote social inclusion and a culture of non-violence and peace.
-

# EMERGENCY APPEAL

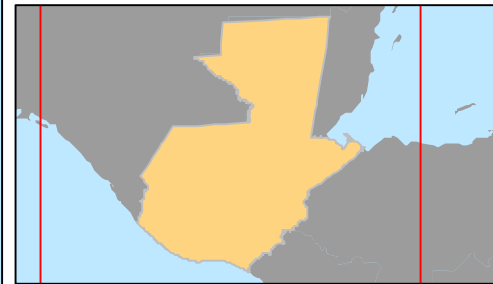
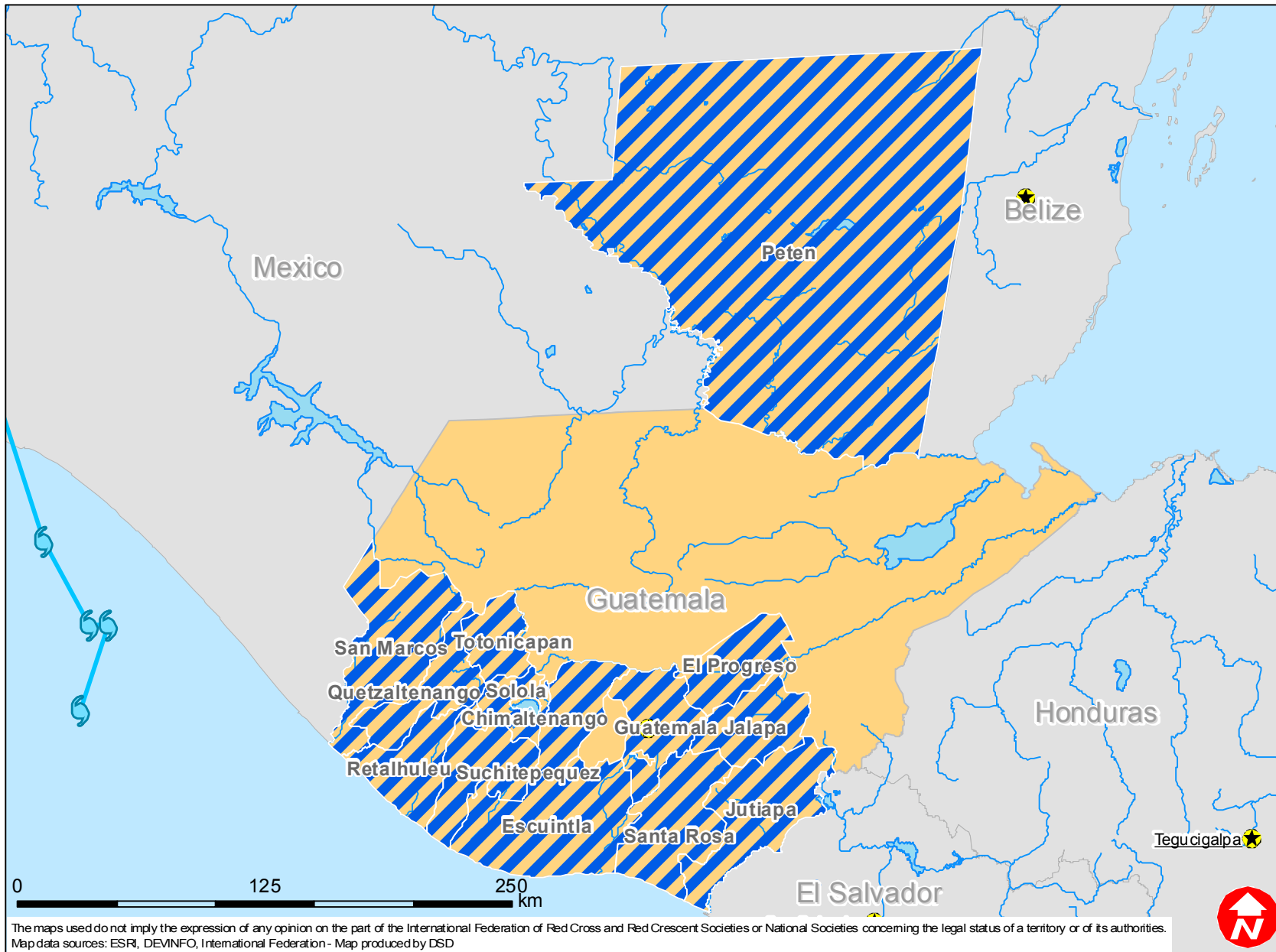
25/10/2011


MDRGT003 Guatemala Floods 2011

Budget Group	Multilateral Response	Inter-Agency Shelter Coord.	Bilateral Response	Appeal Budget CHF
Shelter - Relief				
Shelter - Transitional				
Construction - Housing				
Construction - Facilities				
Construction - Materials				
Clothing & Textiles	79,434			79,434
Food	94,244			94,244
Seeds & Plants				
Water, Sanitation & Hygiene	143,610			143,610
Medical & First Aid				
Teaching Materials	7,180			7,180
Ustensils & Tools	16,156			16,156
Other Supplies & Services				
Emergency Response Units				
Cash Disbursements	134,634			134,634
<b>Total RELIEF ITEMS, CONSTRUCTION AND SUPPLIES</b>	<b>475,258</b>	<b>0</b>	<b>0</b>	<b>475,258</b>
Land & Buildings				
Vehicles Purchase				
Computer & Telecom Equipment	10,771			10,771
Office/Household Furniture & Equipment				
Medical Equipment				
Other Machinery & Equipment				
<b>Total LAND, VEHICLES AND EQUIPMENT</b>	<b>10,771</b>	<b>0</b>	<b>0</b>	<b>10,771</b>
Storage, Warehousing				
Distribution & Monitoring	12,566			12,566
Transport & Vehicle Costs	17,951			17,951
Logistics Services	1,535			1,535
<b>Total LOGISTICS, TRANSPORT AND STORAGE</b>	<b>32,052</b>	<b>0</b>	<b>0</b>	<b>32,052</b>
International Staff	50,263			50,263
National Staff	7,809			7,809
National Society Staff	28,373			28,373
Volunteers	47,571			47,571
<b>Total PERSONNEL</b>	<b>134,016</b>	<b>0</b>	<b>0</b>	<b>134,016</b>
Consultants	4,937			4,937
Professional Fees				
<b>Total CONSULTANTS &amp; PROFESSIONAL FEES</b>	<b>4,937</b>	<b>0</b>	<b>0</b>	<b>4,937</b>
Workshops & Training	28,274			28,274
<b>Total WORKSHOP &amp; TRAINING</b>	<b>28,274</b>	<b>0</b>	<b>0</b>	<b>28,274</b>
Travel	10,771			10,771
Information & Public Relations	13,463			13,463
Office Costs	11,668			11,668
Communications	4,039			4,039
Financial Charges	13,463			13,463
Other General Expenses				
Shared Support Services				
<b>Total GENERAL EXPENDITURES</b>	<b>53,405</b>	<b>0</b>	<b>0</b>	<b>53,405</b>
Programme and Supplementary Services Recovery	48,016			48,016
<b>Total INDIRECT COSTS</b>	<b>48,016</b>	<b>0</b>	<b>0</b>	<b>48,016</b>
<b>TOTAL BUDGET</b>	<b>786,728</b>	<b>0</b>	<b>0</b>	<b>786,728</b>
<b>Available Resources</b>				
Multilateral Contributions				
Bilateral Contributions				
<b>TOTAL AVAILABLE RESOURCES</b>	<b>0</b>	<b>0</b>	<b>0</b>	<b>0</b>
<b>NET EMERGENCY APPEAL NEEDS</b>	<b>786,728</b>	<b>0</b>	<b>0</b>	<b>786,728</b>



# Guatemala: Floods



 Departments most affected

