



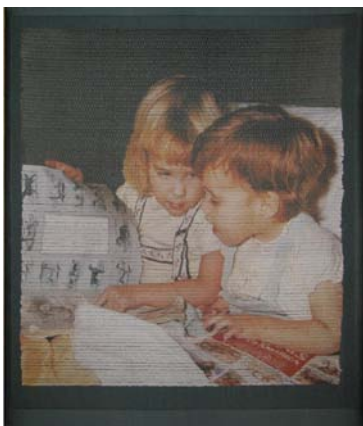
**DARYL LANCASTER**  
**FIBER ARTIST**

6 Utne Court  
Lincoln Park, NJ 07035  
973 628-0185

[theweaver@weaversew.com](mailto:theweaver@weaversew.com)  
[www.weaversew.com](http://www.weaversew.com)  
[www.weaversew.com/wordblog](http://www.weaversew.com/wordblog)



## WEAVE A MEMORY / 2 – 3 Day Workshop



An unusual use for a time honored technique, this four shaft inlay structure can produce a powerful personal statement, capturing a memory by using printed images on cloth. Learn to scan, and manipulate images in Photoshop, and print digital images on silk or cotton with an ink jet printer. The cloth images will then be cut apart into strips, and rewoven back together using a four shaft structure with a ground cloth and tie-down threads. Loom required.

**MAXIMUM ENROLLMENT:** 15

**MATERIALS FEE:** \$20 (\$25 for 3 day) includes pick up stick and silk and/or cotton pre treated fabric and ink jet ink.

**SKILL LEVEL:** All levels, should know how to warp a loom and follow a simple four shaft draft.

**SUPPLY LISTS:**

I will need a screen and three prong extension cord with a power strip. **I will provide an LCD projector and laptop for digital slides and Photoshop software, a scanner and inkjet printer.**

I would like a table for displaying my own work in addition to tables needed for students with table looms.

Students should bring:

- Pre-warped 4 shaft loom minimum width 8" (Structo 240's are OK with additional heddles) See below.
- Bench or high stool if using a table loom.
- Weaving supplies i.e. scissors, portable light, stick shuttle, non skid mat for table looms, extra warp/weft yarn.
- Small rotary cutting mat, rotary cutter with new blade, see-thru straight edge. (Olfa products work best for this application)
- Scotch magic tape (in the green plaid package)
- Optional: long handle tweezers
- 4-6 photos or drawings you wish printed on silk or cotton. High resolution digital images are acceptable as well, as long as the device transporting the images (i.e. thumb drive) has been completely checked for viruses.

### **WARPING DIRECTIONS:**

YOU WILL NEED:

- 12 dent reed (If using a 240 structo with a fixed 15 dent reed, follow sley chart below)
- 4-5 ounces of 10/2 perle cotton or equivalent. (More is necessary if winding a longer warp for a floor loom- see below) Warp/weft should be smooth, linen OK. Select a neutral color, white, beige, gray, brown, black or navy. The warp will show on the sides as a framed border around the print.
- 1 small spool of polyester sewing or serger thread to match the perle cotton. These are the tie down threads that hold the image in place on the background. They will show on top of the printed image.
- 96 heddles each on shafts 1 and 2 (No floating selvedge)
- 47 heddles on shaft 3
- 46 heddles on shaft 4

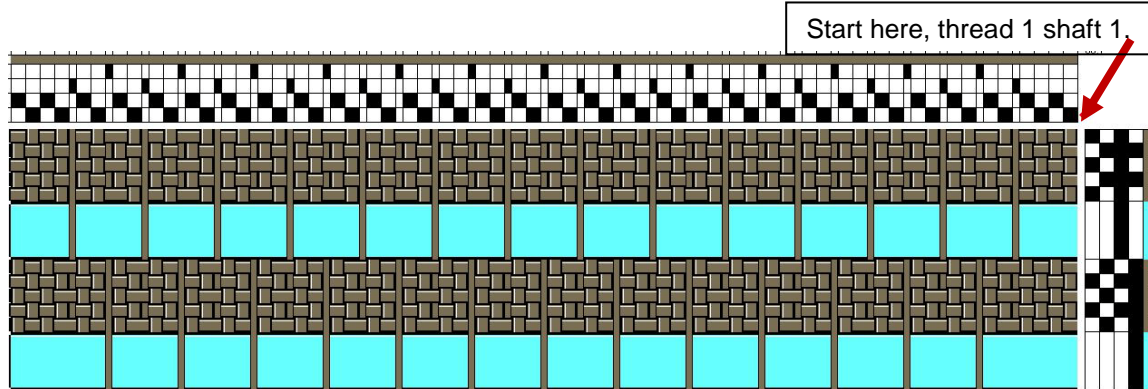
Total heddles 285/ (Note: this technique can be done on a four shaft 8 " Structo. See special notes below)

Wind a two yard x 8" warp. If you are using a floor loom, add an additional yard for waste. See draft below for winding order. It is helpful to wind two ends of ground cotton with one end of polyester sewing thread at the same time, through a paddle or your fingers.

- You will have 192 ends of 10/2 cotton or equivalent.
- You will have 93 ends of polyester sewing/serger thread.

Use a four shaft loom, minimum width 8" wide loom using the following draft. Threads on shafts one and two are 10/2 perle cotton or equivalent. Threads on shafts three and four are polyester sewing thread to match perle cotton. The first four and last four warp threads are only perle cotton.

NOTE: THE DRAFT BELOW REPRESENTS ONLY A PORTION. CONTINUE IN PATTERN FOR EIGHT INCHES ACROSS! (1,2,3, 1,2,4, 1,2,3, 1,2,4, ETC.)



Sley a 12 dent reed as follows: Starting from the right, threads 1,2 on shafts 1,2 in the first dent. Threads 3,4,5 on shafts 1,2,3 in the second dent. Threads 6,7,8 on shafts 1,2,4 in the third dent, etc. Except for the end dents, there will be three threads, 2 cotton and 1 polyester, in each dent.

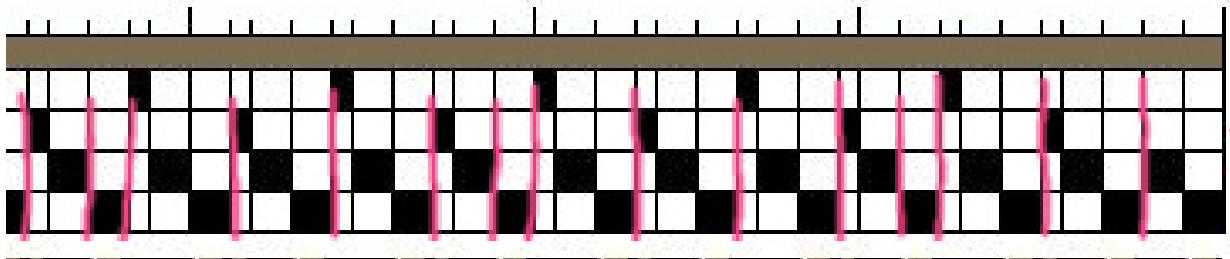
**FOR STRUCTO LOOMS:**

For 8" Structo 240's you will need to add string heddles or texsolv (available from Halcyonyarn.com). In addition, Mary Scott from Serendipity Farms occasionally carries Structo replacement heddles

Mary Scott  
 Serendipity Farm & Studio  
 980 Cypress Chapel Rd.  
 Suffolk, VA 23434

[sheepman@gte.net](mailto:sheepman@gte.net)  
 757-986-2010 (h)  
 757-651-2632 (c)

For sleying a 15 dent fixed reed as in a Structo: Note dividing lines illustrate for one inch. Repeat across the reed for 8 inches.



If you have any questions, please feel free to contact me.  
 Daryl Lancaster [theweaver@weaversew.com](mailto:theweaver@weaversew.com) 973 706-7745

**BIO:** Daryl Lancaster, a hand-weaver and fiber artist known for her hand-woven garments has been sewing for more than 45 years. She gives lectures and workshops to guilds, conferences,

and craft centers all over the United States and Canada. The former Features Editor for Handwoven Magazine, she frequently contributes to various weaving and sewing publications.