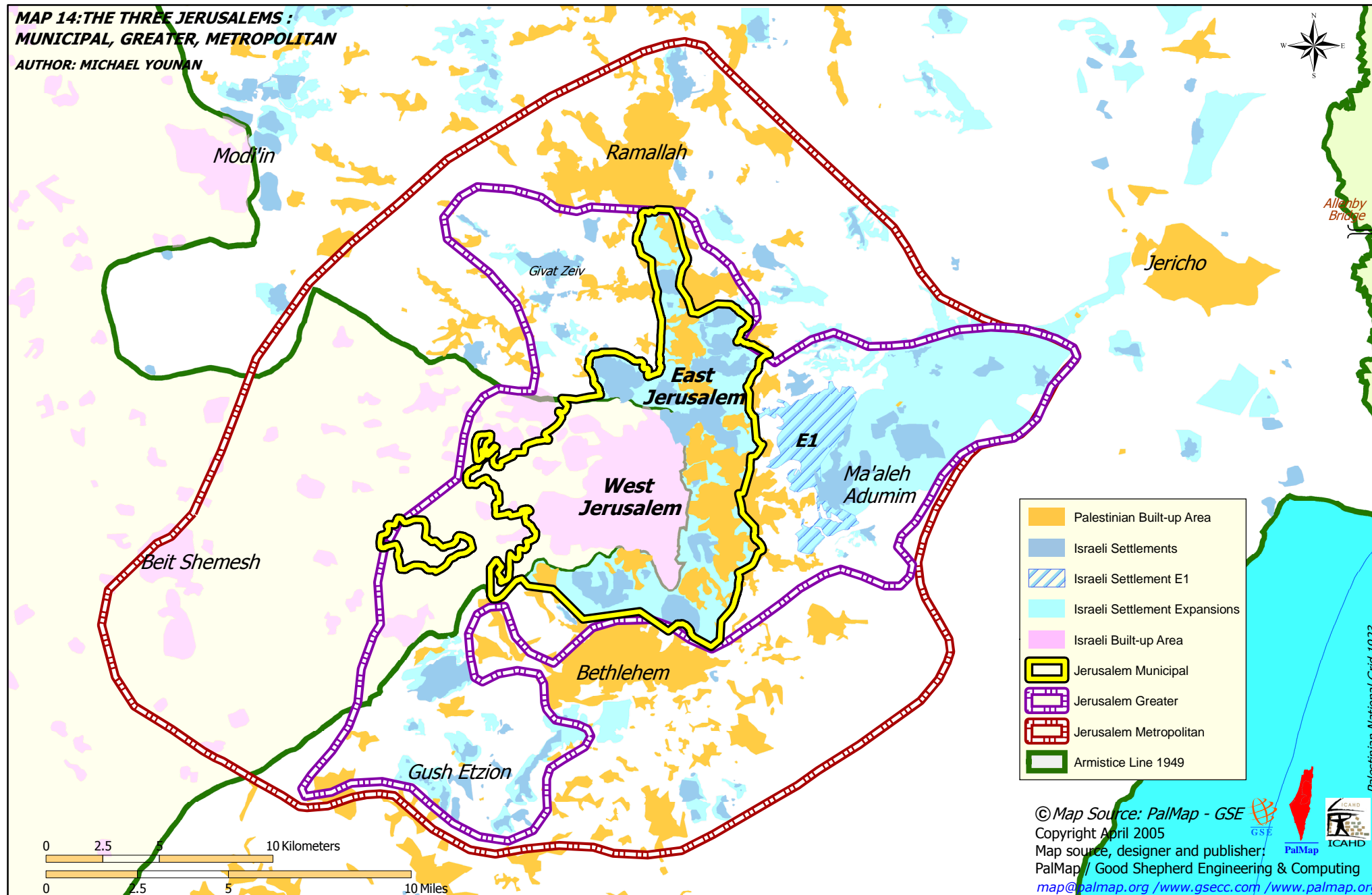


**MAP 14: THE THREE JERUSALEMS :
MUNICIPAL, GREATER, METROPOLITAN**
AUTHOR: MICHAEL YOUNAN



© Map Source: PalMap - GSE
 Copyright April 2005
 Map source, designer and publisher:
 PalMap / Good Shepherd Engineering & Computing
map@palmap.org / www.gsecc.com / www.palmap.org