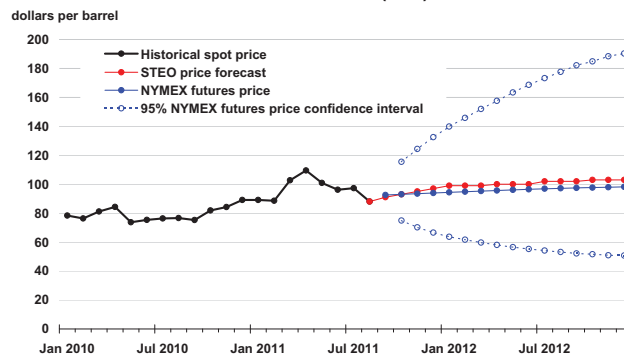




# Short-Term Energy Outlook

## Chart Gallery for August 2011

### West Texas Intermediate (WTI) Crude Oil Price

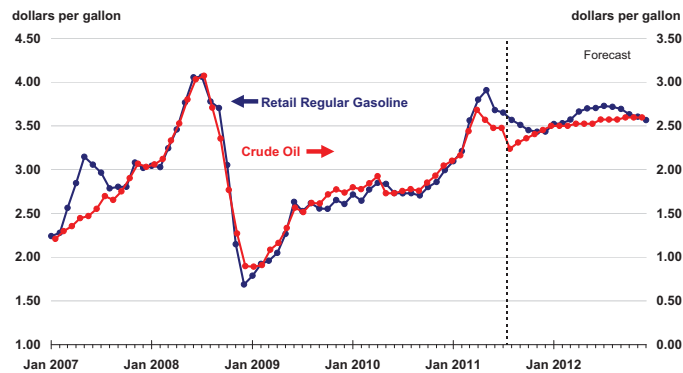


Note: Confidence interval derived from options market information for the 5 trading days ending August 4, 2011  
Intervals not calculated for months with sparse trading in "near-the-money" options contracts

Source: Short-Term Energy Outlook, August 2011



### U.S. Gasoline and Crude Oil Prices

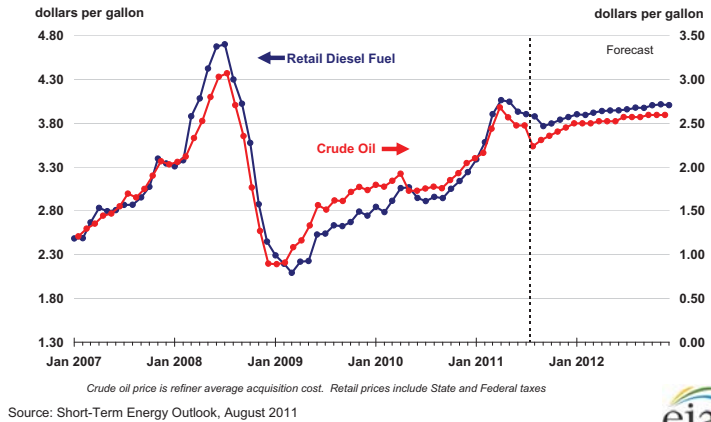


Crude oil price is refiner average acquisition cost. Retail prices include State and Federal taxes

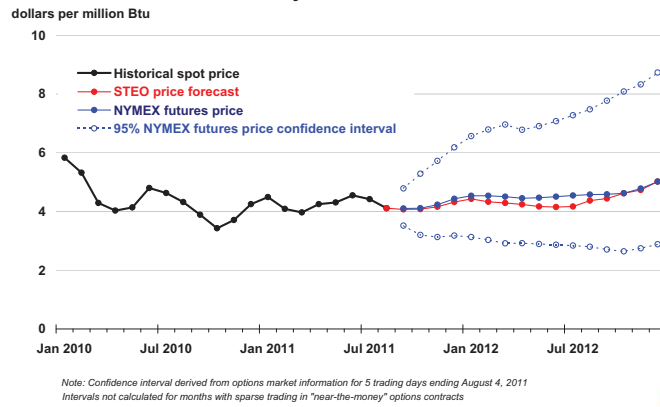
Source: Short-Term Energy Outlook, August 2011



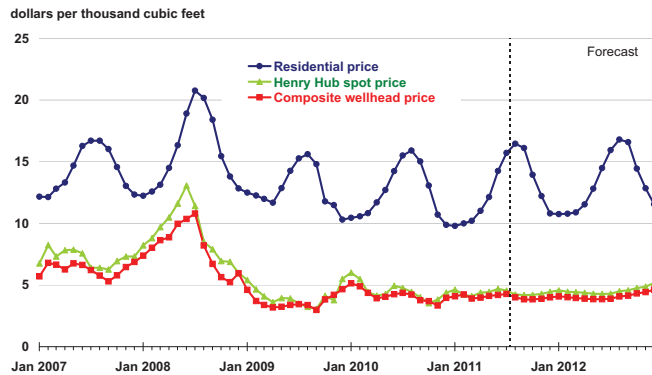
### U.S. Diesel Fuel and Crude Oil Prices



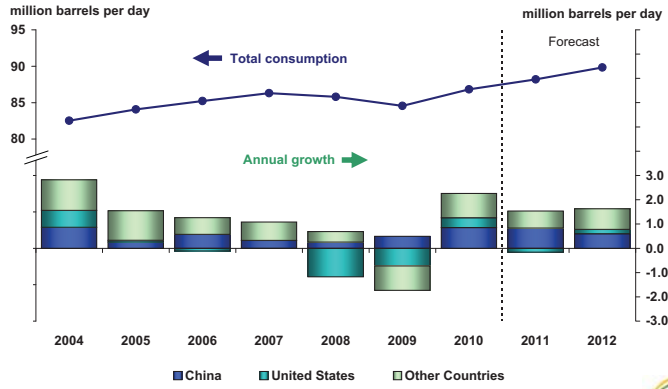
### Henry Hub Natural Gas Price



### Natural Gas Prices



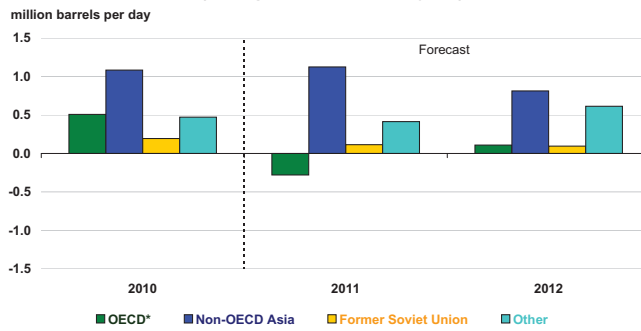
### World Liquid Fuels Consumption



Source: Short-Term Energy Outlook, August 2011



### World Liquid Fuels Consumption Growth (change from previous year)

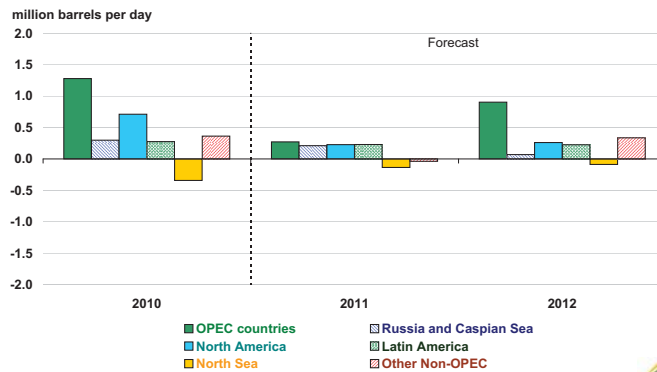


\* Countries belonging to Organization for Economic Cooperation and Development

Source: Short-Term Energy Outlook, August 2011



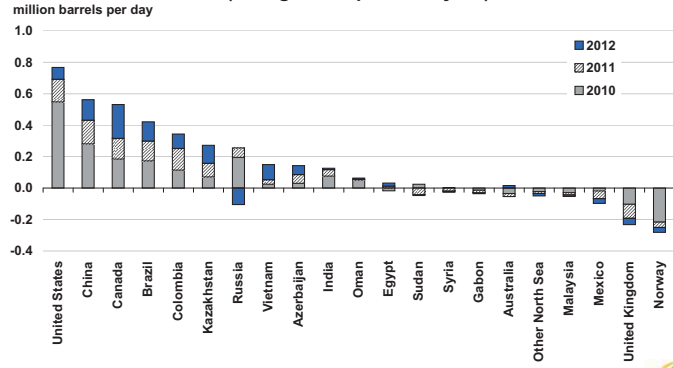
### World Crude Oil and Liquid Fuels Production Growth (change from previous year)



Source: Short-Term Energy Outlook, August 2011



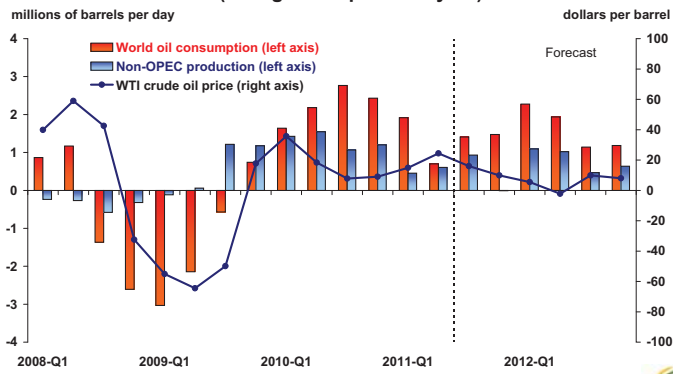
### Non-OPEC Crude Oil and Liquid Fuels Production Growth (change from previous year)



Source: Short-Term Energy Outlook, August 2011



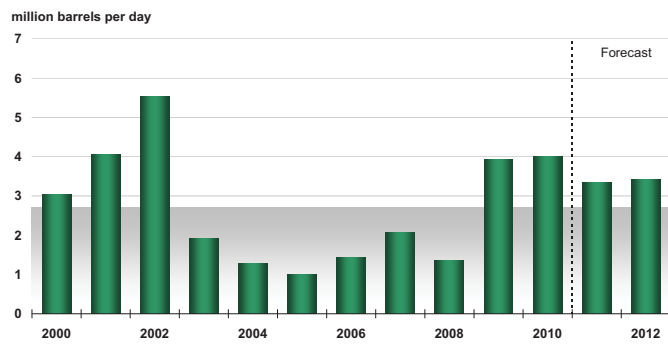
### World Consumption and Non-OPEC Production (change from previous year)



Source: Short-Term Energy Outlook, August 2011



### OPEC Surplus Crude Oil Production Capacity

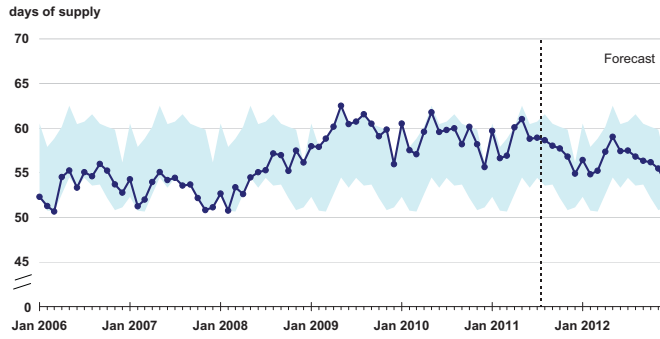


Note: Shaded area represents 2000-2010 average (2.7 million barrels per day)

Source: Short-Term Energy Outlook, August 2011



### OECD Commercial Oil Stocks

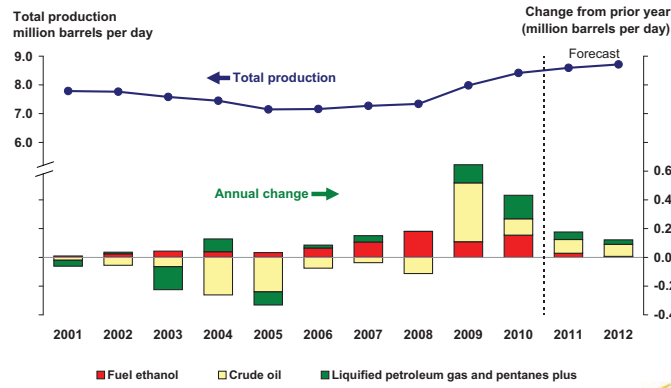


Note: Colored band represents the range between the minimum and maximum observed inventories from Jan. 2006 - Dec. 2010.

Source: Short-Term Energy Outlook, August 2011



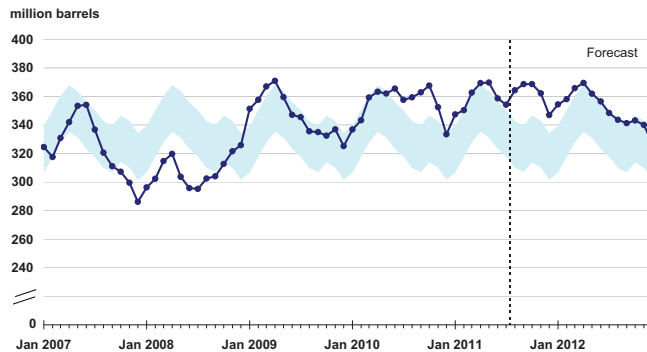
### U.S. Crude Oil and Liquid Fuels Production



Source: Short-Term Energy Outlook, August 2011



### U.S. Crude Oil Stocks

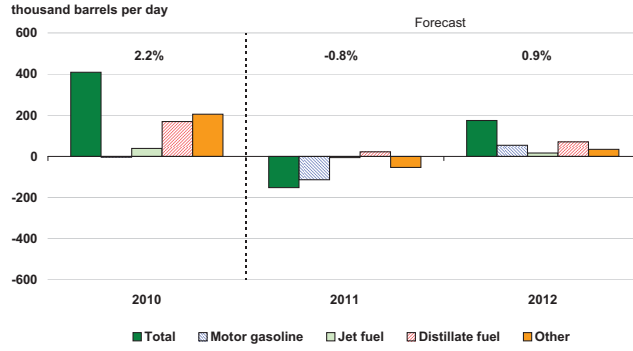


Note: Colored bands represent "normal" range published in EIA Weekly Petroleum Status Report, Appendix A.

Source: Short-Term Energy Outlook, August 2011



### U.S. Liquid Fuels Consumption Growth (change from previous year)

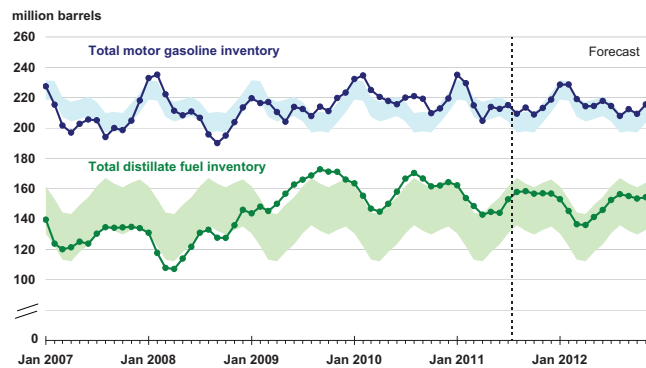


Note: Percent change labels refer to total petroleum products growth

Source: Short-Term Energy Outlook, August 2011



### U.S. Gasoline and Distillate Inventories

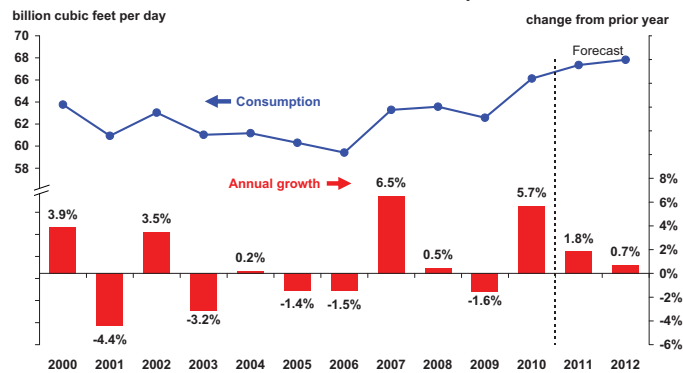


Note: Colored bands represent "normal" range published in EIA Weekly Petroleum Status Report, Appendix A.

Source: Short-Term Energy Outlook, August 2011



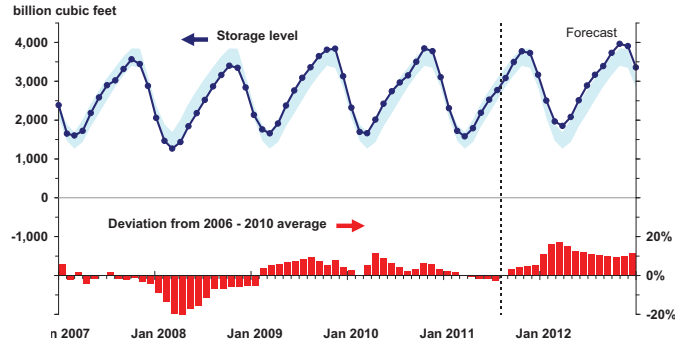
### U.S. Total Natural Gas Consumption



Source: Short-Term Energy Outlook, August 2011



### U.S. Working Natural Gas in Storage

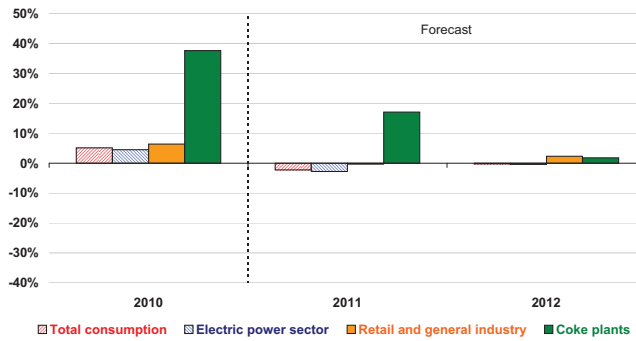


Note: Colored band around storage levels represents the range between the minimum and maximum from Jan. 2006 - Dec. 2010

Source: Short-Term Energy Outlook, August 2011



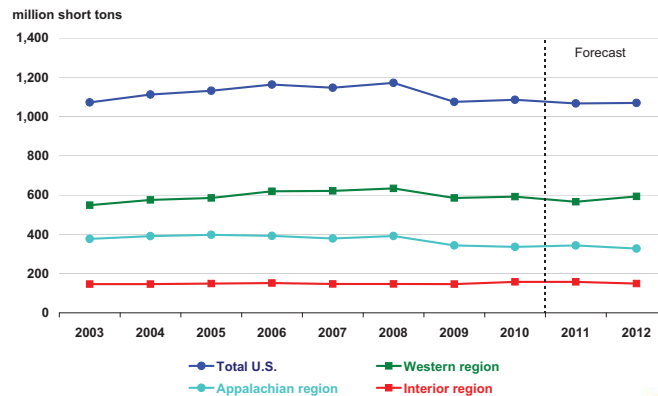
### U.S. Coal Consumption Growth (change from previous year)



Source: Short-Term Energy Outlook, August 2011



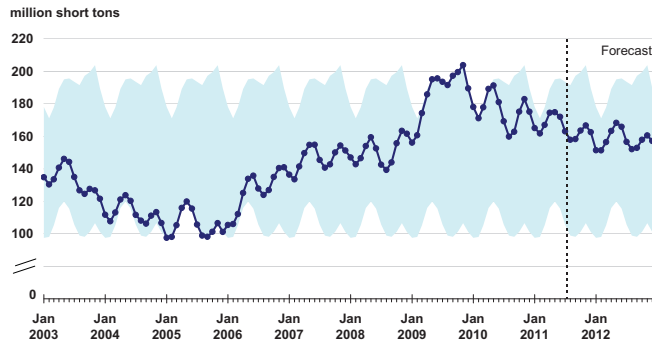
### U.S. Annual Coal Production



Source: Short-Term Energy Outlook, August 2011



### U.S. Electric Power Coal Stocks

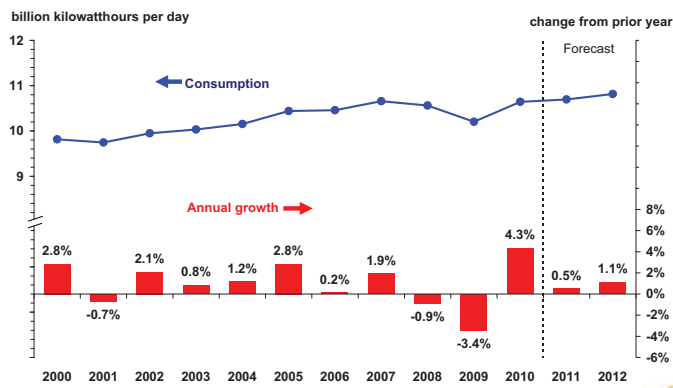


Note: Colored bands represent "normal" range published in EIA Weekly Petroleum Status Report, Appendix A.

Source: Short-Term Energy Outlook, August 2011



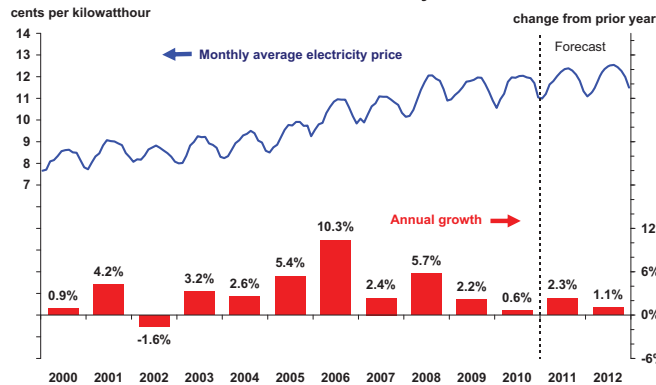
### U.S. Total Electricity Consumption



Source: Short-Term Energy Outlook, August 2011



### U.S. Residential Electricity Price

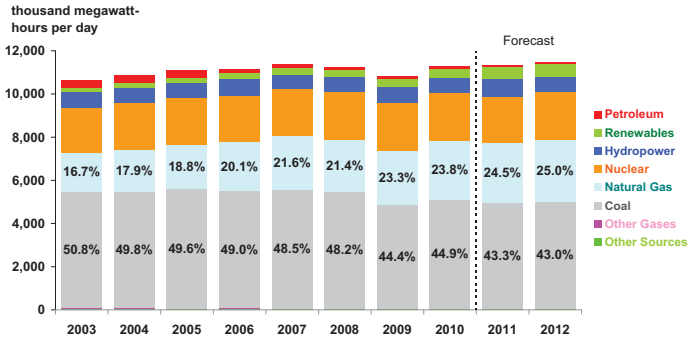


Source: Short-Term Energy Outlook, August 2011





### U.S. Electricity Generation by Fuel, All Sectors

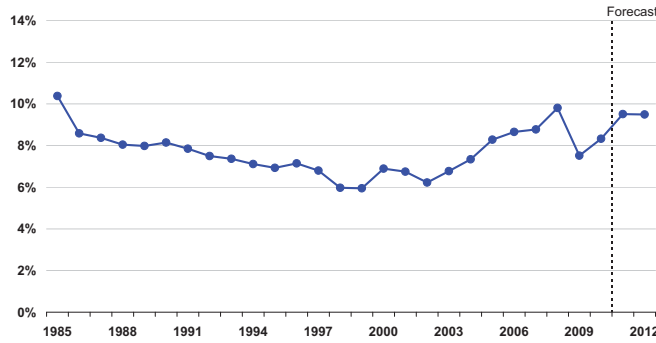


Note: Labels show percentage share of total generation provided by natural gas and coal.

Source: Short-Term Energy Outlook, August 2011



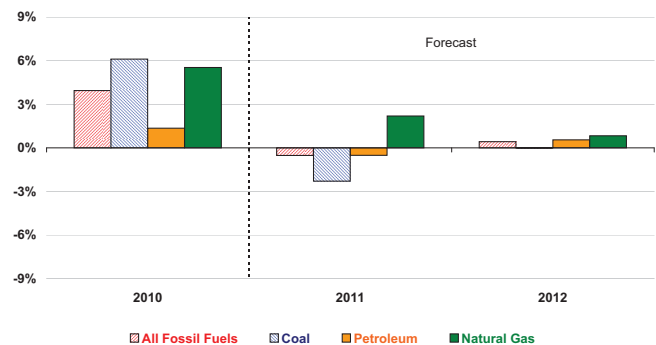
### U.S. Annual Energy Expenditures Share of Gross Domestic Product



Source: Short-Term Energy Outlook, August 2011



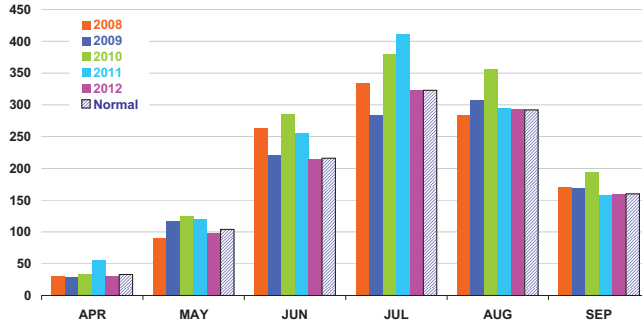
### U.S. Carbon Dioxide Emissions Growth (change from previous year)



Source: Short-Term Energy Outlook, August 2011



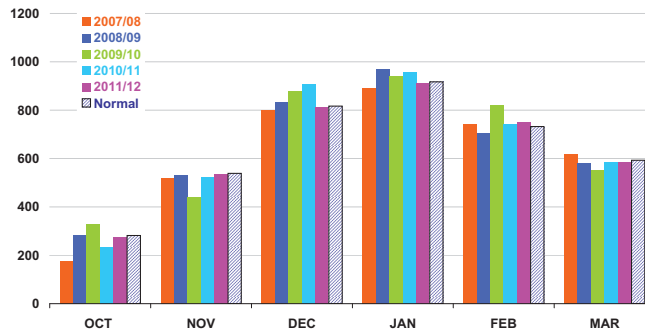
### U.S. Summer Cooling Degree-Days (population-weighted)



Data source: National Oceanic and Atmospheric Administration, National Weather Service  
[http://www.cpc.ncep.noaa.gov/products/analysis\\_monitoring/cdus/degree\\_days/](http://www.cpc.ncep.noaa.gov/products/analysis_monitoring/cdus/degree_days/)  
 Source: Short-Term Energy Outlook, August 2011



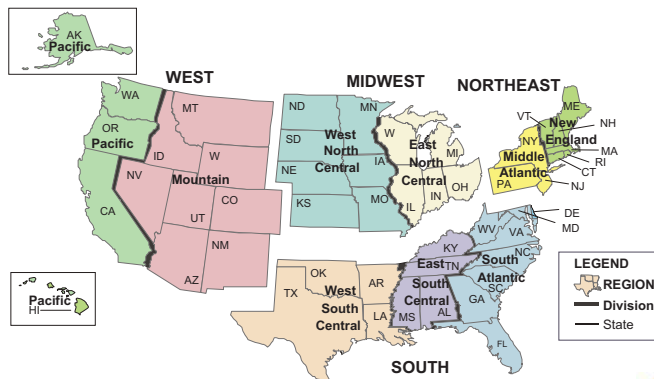
### U.S. Winter Heating Degree-Days (population-weighted)



Data source: National Oceanic and Atmospheric Administration, National Weather Service  
[http://www.cpc.ncep.noaa.gov/products/analysis\\_monitoring/cdus/degree\\_days/](http://www.cpc.ncep.noaa.gov/products/analysis_monitoring/cdus/degree_days/)  
 Source: Short-Term Energy Outlook, August 2011



### U.S. Census Regions and Census Divisions



Source: Short-Term Energy Outlook, August 2011

