

MySQL

THE WORLD'S MOST POPULAR
OPEN SOURCE DATABASE

HIGHLIGHTS

- MySQL Database
- MySQL Enterprise Backup
- MySQL Enterprise Monitor
- MySQL Query Analyzer
- MySQL Workbench
- 140+ MySQL Advisor Rules
- 600+ Monitored Variables
- 30+ Performance Graphs
- Oracle Premier Support

"With the MySQL Query Analyzer, we were able to identify and analyze problematic SQL code, and triple our database performance. More importantly, we were able to accomplish this in three days, rather than taking weeks."

—Keith Souhrada,

Software Development Engineer,
Big Fish Games

The MySQL Enterprise Edition includes the most comprehensive set of MySQL production, backup, monitoring, modeling, development, and administration tools so businesses can achieve the highest levels of reliability, security, and uptime.

MySQL Enterprise Edition reduces the risk, cost, and time required in developing, deploying, and managing business-critical MySQL applications. Only MySQL Enterprise Edition enables you to:

- **Maximize uptime** with comprehensive backup, monitoring and administration tools
- **Reduce risk of data loss** with MySQL Enterprise Backup for hot backup and recovery
- **Simplify database monitoring and administration** with MySQL Enterprise Monitor
- **Gain visibility** into the health and SQL activity of databases with MySQL Enterprise Monitor
- **Implement MySQL best practices** using more than 140 MySQL advisor rules
- **Improve application performance** with the MySQL Query Analyzer feature
- **Visually design databases and develop queries** with MySQL Workbench

MySQL Database

MySQL is the world's most popular open source database for cost-effectively delivering reliable, high-performance and scalable e-commerce, online transaction processing, and embedded database applications. It is an integrated, transaction safe, ACID-compliant database with full commit, rollback, crash recovery, and row-level locking capabilities. MySQL delivers the ease of use, scalability, and high performance, as well as a full suite of database drivers and visual tools to help developers and DBAs build and manage their MySQL applications.

The MySQL Database provides the following features:

- **Replication** to improve scalability and performance of high-volume applications
- **Partitioning** to improve performance and simplify management of very large database environments
- **Stored procedures** to increase developer productivity
- **Triggers** to enforce complex business rules at the database level
- **Views** to reduce the complexity of data while increasing security
- **Information schema** to provide easy access to metadata
- **Pluggable storage engine** architecture for maximum flexibility

MySQL Enterprise Backup

MySQL Enterprise Backup performs online "Hot", non-blocking backups of your MySQL databases. Full backups can be performed on all InnoDB data, while MySQL is online, without interrupting queries or updates. In addition, incremental backups are supported where only data that has changed from a previous backup is backed up. Partial backups are also supported when only certain tables or tablespaces need to be backed up. In conjunction with the MySQL binlog, users can perform point in time recovery. Also, MySQL Enterprise Backup supports compression that typically reduces backup size up to 90% when compared with the size of actual database files, helping to reduce storage costs.

MySQL Enterprise Monitor

The MySQL Enterprise Monitor provides at-a-glance views of the health of your MySQL databases. It continuously monitors your MySQL servers and alerts you to potential problems before they impact your system. It's like having a "virtual DBA" assistant at your side to recommend best practices and detect security vulnerabilities, improve replication, and optimize performance. As a result, DBAs and system administrators can manage more servers in less time.

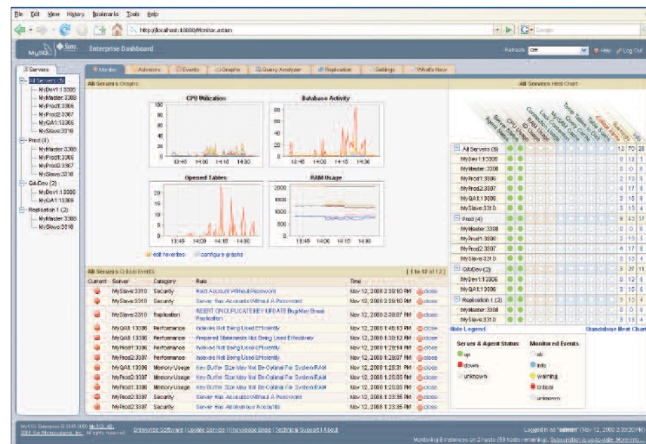


Figure 1. The MySQL Enterprise Monitor provides an at-a-glance view of the health of your MySQL databases.

MySQL Replication Monitor

The MySQL Replication Monitor provides real-time replication health and status checks on master/slave performance and latency issues.

MySQL Advisors

The MySQL Enterprise Monitor includes more than 140 MySQL advisor rules that monitor more than 600 MySQL and operating system–specific variables to help you automatically enforce MySQL-recommended database best practices. They deliver expert advice that come straight from the database professionals who built the MySQL database. The advisors provide tailored step-by-step instructions to solve specific problems.

The MySQL Enterprise Monitor includes the following:

- **Upgrade Advisor** - Monitors and advises you on using the most up-to-date version of MySQL.
- **Administration Advisor** - Enforces DBA best practices to prevent costly outages.
- **Security Advisor** - Minimizes exposure to security vulnerabilities.
- **Replication Advisor** - Recommends solutions for replication setup and performance improvements.
- **Schema Advisor** - Assists in uncovering database design issues that reduce performance.
- **Performance Advisor** - Recommends changes to boost database performance.
- **Memory Usage Advisor** - Monitors dynamic memory-related server metrics and recommends configuration changes to improve performance.
- **Custom Advisor** - Enables you to create custom best practice rules tailored to your needs.

MySQL Query Analyzer

The MySQL Query Analyzer helps developers and DBAs improve application performance by monitoring queries and accurately pinpointing SQL code that is causing a slow down. With the new MySQL Connector Plug-ins, performance of Java and Microsoft .NET applications can be optimized more efficiently by communicating directly with the MySQL Query Analyzer.

Queries are presented in an aggregated view across all MySQL servers so DBAs and developers can filter for specific query problems and analyze their most expensive code. With the MySQL Query Analyzer, DBAs can improve the SQL code during active development and continuously monitor and tune the queries in production.

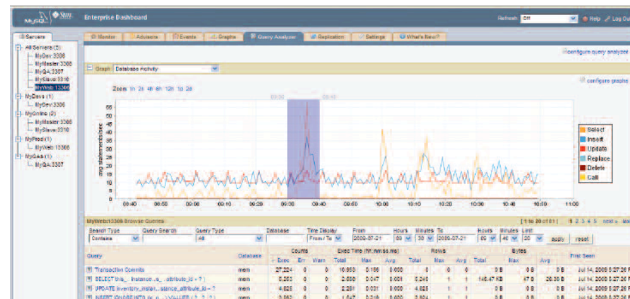


Figure 2. The MySQL Query Analyzer, with the correlation graphs, allows DBAs and developers to filter and analyze problem queries by highlighting the time frame of interest.

MySQL Workbench

MySQL Workbench is a unified visual tool that enables developers, DBAs, and data architects to design, develop, and administer database applications. MySQL Workbench includes advanced data modeling capabilities, a visual SQL editor and comprehensive administration tools for database design, query development, server configuration and user administration.

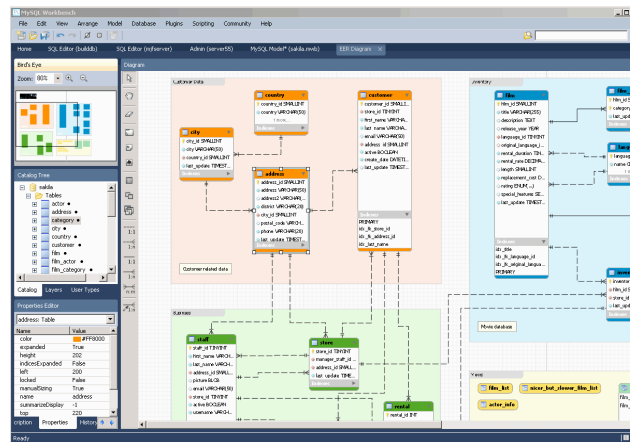


Figure 3. MySQL Workbench provides data modeling, SQL development, and administration tools.

Oracle Premier Support

Oracle offers 24x7, global support for MySQL. The MySQL Support team is composed of seasoned MySQL developers, who are database experts and understand the issues and challenges you face. With Oracle Premier Support, you can lower the total cost and risk of owning your MySQL databases, improve the return from your IT investment, and optimize the business value of your IT solutions. Oracle Premier Support for MySQL includes the following features:

- 24 x 7 production support
- Unlimited support incidents
- Knowledge Base
- Maintenance releases, bug fixes, patches and updates
- MySQL consultative support

For end users, annual subscriptions include Premier Support. For ISVs and OEMs, Premier Support must be purchased separately from commercial licenses.

MySQL Editions

MySQL is available in 4 commercial editions:

- MySQL Enterprise Edition
- MySQL Standard Edition
- MySQL Cluster Carrier Grade Edition
- MySQL Classic Edition (only available for ISVs/OEMs)

To learn more, visit mysql.com/products.

About MySQL

MySQL is the world’s most popular open source database software. Many of the world’s largest and fastest-growing organizations use MySQL to save time and money powering their high-volume Websites, business-critical systems, and packaged software—including industry leaders such as Yahoo!, Google, Alcatel-Lucent, Nokia, YouTube, and Zappos.com.

Partial List of MySQL Customers		
Web/End-User Customers	Embedded/ISV Customers	Telecom Customers
<ul style="list-style-type: none"> • Amazon.com • Bank of America • Craigslist • Dow Jones • Disney • Facebook • Google • Lufthansa • NASA • Southwest Airlines • Wells Fargo • Yahoo! • YouTube • Zappos 	<ul style="list-style-type: none"> • Adobe • Airbus • CA NetQoS • Dell Kace • Eastman Kodak • F5 Networks • Hewlett Packard • McAfee • Quest • Sage Group • SAP BusinessObjects • SonicWALL • Symantec • Trend Micro 	<ul style="list-style-type: none"> • Alcatel-Lucent • AT&T Wireless • British Telecom • Cisco • Comcast • Cox Communications • Ericsson • France Telecom • Motorola • Nokia • Nortel • Siemens • Telenor • Virgin Mobile

Contact Us

For more information about MySQL Enterprise Edition, visit mysql.com/enterprise.

For more information about MySQL Support, Training and Consulting, visit mysql.com/services.

To contact MySQL online or via telephone, visit mysql.com/contact.



Copyright © 2010, Oracle and/or its affiliates. All rights reserved.

This document is provided for information purposes only and the contents hereof are subject to change without notice. This document is not warranted to be error-free, nor subject to any other warranties or conditions, whether expressed orally or implied in law, including implied warranties and conditions of merchantability or fitness for a particular purpose. We specifically disclaim any liability with respect to this document and no contractual obligations are formed either directly or indirectly by this document. This document may not be reproduced or transmitted in any form or by any means, electronic or mechanical, for any purpose, without our prior written permission.

Oracle and Java are registered trademarks of Oracle and/or its affiliates. Other names may be trademarks of their respective owners.

AMD, Opteron, the AMD logo, and the AMD Opteron logo are trademarks or registered trademarks of Advanced Micro Devices. Intel and Intel Xeon are trademarks or registered trademarks of Intel Corporation. All SPARC trademarks are used under license and are trademarks or registered trademarks of SPARC International, Inc. UNIX is a registered trademark licensed through X/Open Company, Ltd. 0410

SOFTWARE. HARDWARE. COMPLETE.